

# 2024

# Economic Strength Rankings

Metropolitan

Micropolitan



#1 Salt Lake City, UT



#1 Bozeman, MT



#2 Austin, TX



#3 Nashville, TN



#2 Heber, UT



#3 Kalispell, MT



#4 Huntsville, AL



#5 Raleigh, NC



#4 Lebanon, NH



#5 Helena, MT



**POLICOM Corporation**  
**Economic Strength Rankings - 2024**  
By William H. Fruth

*“Economic strength is the long-term tendency for an area to consistently grow in both size and quality.”*

**Salt Lake City and Bozeman Top Economies  
in POLICOM’s Annual National Rankings**

The Salt Lake City, UT MSA is ranked the strongest Metropolitan Area in POLICOM’s annual “Economic Strength Rankings.” The area has been in the “top ten” nine of the last ten years.

Economic Strength is the long-term tendency for an area to consistently grow in both size and quality. POLICOM considers twenty-three economic factors over a 20-year period to determine the strength of an area.

Manufacturing is the most dominant contributory industry in the Salt Lake City area. With more than 65,000 people employed in Manufacturing, earning \$5.8 billion, this sector accounts for about 31% of the contributory wealth in the area.

A strong presence of the State Government, Information Technology, Corporate Headquarters, and Finance & Insurance sectors cause the economy to be very diversified.

Defined by the Office of Management and Budget, Metropolitan Statistical Areas (MSA) have a city of at least 50,000 people and must be a minimum of one county, most include several counties. There are 384 Metropolitan Statistical Areas (OMB Bulletin 20-01).

Among the top ten Metropolitan Areas, all but Jacksonville, FL routinely appear on the list.

Comprised of five counties, the Jacksonville Metro has become Florida’s “strongest economy” and has improved significantly in the rankings. Ten years ago, Jacksonville ranked 157<sup>th</sup> and has steadily improved since to 10<sup>th</sup>.



Salt Lake City, UT



Jacksonville, FL

Its economy is extremely diversified with five dominant primary industries.

Manufacturing and Finance & Insurance are the most important, which are followed closely by Transportation, Military, and Administration.

Bozeman, MT is ranked the #1 Micropolitan Area for the seventh straight year. It has grown in size and quality in a consistent manner for many years. However, this will be the last year Bozeman will be the #1 Micropolitan Area, as beginning next year it becomes designated as a Metropolitan Area due to the City of Bozeman reaching a population greater than 50,000 people.

Micropolitan Statistical Areas are “quasi-rural,” smaller areas. A Micropolitan Area must have a city of at least 10,000 people, but fewer than 50,000. It must be at least one county and many are a single county. There are 543 Micropolitan Statistical Areas (OMB Bulletin 20-01).

One of the important criteria for POLICOM’s rankings is the “consistency” of the economy.

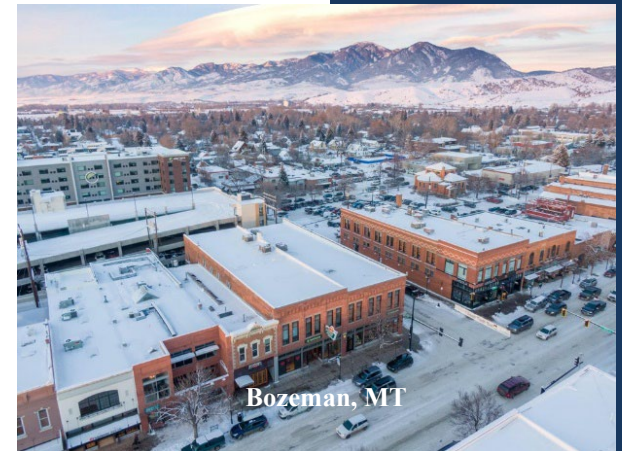
Since Micropolitan Areas are relatively small, thus less diversified, they are subject to rapid economic change, causing them to fluctuate, year by year, in POLICOM’s rankings. If Mom lays off Pop at the corner store in Lamesa, TX (population 12,130), there might be a 5% drop in retail employment (just joking, Pop still works there).

As a result, a Micropolitan Area can drop 30 places in the rankings in one year and gain 30 the next.

Most of the top ten Micropolitan Areas have had reasonably good growth, but not the fastest growth. More important, they have grown in a very consistent manner, causing them to score well in the rankings.

Additionally, none of the top Metropolitan or Micropolitan Areas have a high degree of “poverty,” which is one of the criteria for the rankings.

The graph visually compares the average of the ten strongest and weakest Metropolitan and Micropolitan Areas for relative Employment Growth from 2003 to 2022.



384 Metropolitan Areas	
<b>2024</b>	<b>Ten Strongest Metropolitan Areas</b>
1	Salt Lake City, UT
2	Austin-Round Rock, TX
3	Nashville, TN
4	Raleigh-Cary, NC
5	Huntsville, AL
6	Sioux Falls, SD
7	Madison, WI
8	Dallas-Fort Worth, TX
9	Indianapolis, IN
10	Jacksonville, FL
<b>2024</b>	<b>Ten Weakest Metropolitan Areas</b>
375	Wheeling, WV-OH
376	Gadsden, AL
377	Danville, IL
378	Cumberland, MD-WV
379	Kokomo, IN
380	Pine Bluff, AR
381	Farmington, NM
382	Weirton-Steubenville, WV-OH
383	Johnstown, PA
384	Beckley, WV

543 Micropolitan Areas	
<b>2024</b>	<b>Ten Strongest Micropolitan Areas</b>
1	Bozeman, MT
2	Heber, UT
3	Kalispell, MT
4	Lebanon, NH-VT
5	Helena, MT
6	Jackson, WY-ID
7	Concord, NH
8	Fremont, NE
9	Ellensburg, WA
10	Pinehurst-Southern Pines, NC
<b>2024</b>	<b>Ten Weakest Micropolitan Areas</b>
534	Middlesborough, KY
535	Raymondville, TX
536	Summerville, GA
537	Kennett, MO
538	Portales, NM
539	Indianola, MS
540	Las Vegas, NM
541	Forrest City, AR
542	Clarksdale, MS
543	Helena-West Helena, AR

You can see the strongest areas grew rapidly, in a consistent manner (except for the Covid year 2020) for an extended period of time, while the weakest areas have been declining for 30 years. In the weakest areas, there were fewer people working in 2022 than in 2003.

The formulas used to create the rankings are designed to measure local, contained economies and cannot be applied to states.

State data is the sum of many local economies. When aggregated, the results can be misleading.

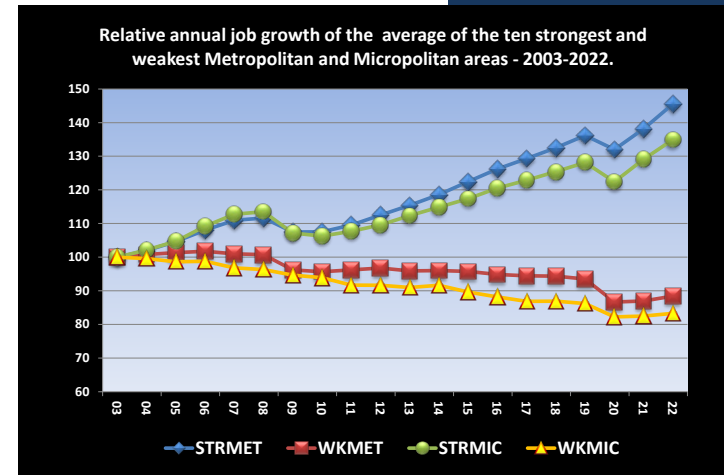
Within each state there are very strong and very weak areas, sometimes geographically adjoining each other. If the data for both was aggregated, the result would be an "average economy," which is not the case for either.

However, states do have tendencies or trends. The strength of the statistical areas statewide many times reflects the advantages or disadvantages of the state as a whole.

The chart provides a summary of the "improvement" the statistical areas have made in the rankings between 2024 and 2019 in the ten largest populated states.

The Metropolitan and Micropolitan Areas in Florida and North Carolina have significantly improved in economic strength since the 2019 rankings. Of the 68 statistical areas in these two states, only 3 declined from their ranking in 2019.

California and Pennsylvania unfortunately present the opposite condition. Of the 69 statistical areas in the two states, 65 declined in the rankings over the last five years.



### Number of Metropolitan and Micropolitan Areas Which Improved in Economic Strength Rankings.

From 2019 to 2024 - Ten Largest States

	Number of METROS	Number Improved	% Improved	Number of MICROS	Number Improved	% Improved
Florida	22	21	95%	7	6	86%
North Carolina	17	16	94%	22	22	100%
Michigan	15	10	67%	18	12	67%
New York	12	5	42%	14	6	43%
Georgia	15	6	40%	24	16	67%
Texas	25	8	32%	46	11	24%
Ohio	14	4	29%	32	13	41%
Pennsylvania	18	2	11%	17	0	0%
Illinois	13	1	8%	19	8	42%
California	26	1	4%	8	1	13%

"Improved" means the area ranked better in 2024 than in 2019. If it did not improve, it declined.

Determined by subtracting the 2019 ranking from the 2024 ranking.

## About the Rankings:

POLICOM specializes in studying the dynamics of local economies. From its research, it determines if an area is growing or declining, what is causing this to happen, and offers ideas and solutions to communities to improve the situation.

POLICOM addresses the condition of an economy from the viewpoint of its impact upon the “standard of living” of the people who live and work in an area.

The economic strength rankings are created so POLICOM can study the characteristics of strong and weak economies. The highest ranked areas have had rapid, consistent growth in both size and quality for an extended period. The lowest ranked areas have been in decline for a very long time.

POLICOM has created economic strength rankings for all Metropolitan Statistical Areas since 1996 and all Micropolitan Statistical Areas since they were created in 2002.

## Statistical Area Definitions:

Metropolitan and Micropolitan Areas are geographically defined by the Office of Management and Budget (OMB), The White House. The definitions are announced through “Bulletins” issued by the OMB. The principal criteria to determine a statistical area is commuting patterns. A local economy is defined by where people live and work, earn and spend. Oftentimes this activity crosses county boundaries.

The 2024 Economic Strength Rankings are geographically based on OMB Bulletin 20-01 published March 6, 2020 (PDF of OMB Bulletin can be downloaded at [www.policom.com](http://www.policom.com)). Data through calendar 2022 is based on these definitions.

However, on July 21, 2023, the OMB published Bulletin 23-01, which announced new definitions for the statistical areas based on the 2020 census and revised commuting patterns. More than 200 areas were affected including name changes, addition or removal of counties, mergers with adjoining areas, loss of designation entirely, and changing from a Micropolitan to a Metropolitan area or the opposite.

Federal data collection and publication reflecting the new definitions will likely not occur until mid to late 2024. 2025 Economic Strength Rankings will be based on the new definitions.

## Contact POLICOM

2740 SW Martin  
Downs Blvd. #279  
Palm City, FL  
34990

772-781-5559  
[info@policom.com](mailto:info@policom.com)  
[www.policom.com](http://www.policom.com)

The economic  
strength rankings  
measure how the  
areas have  
behaved, not why.

## **Economic Strength Methodology:**

The formulas used to determine economic strength measure how the economy has behaved, not what has caused it to perform. The following are the data sectors used to create the rankings.

Regional Economic Information System (REIS) data is the principal data set used to create the rankings. It is published by the Bureau of Economic Analysis (BEA), US Department of Commerce. The data set has been collected in a reasonably consistent manner using source data since 1969.

The Bureau of Economic Analysis released data for 2022 in November of 2023.

## **Industrial Sectors:**

Group 1 – These sectors reflect the overall growth in size and quality. The “quality” of the economy is based upon what people earn, as individual earnings influence a person’s “standard of living.”

- All Workers - Earnings
- All Workers - Jobs
- All Workers – Wages
- Per Capita Total Worker Earnings
- Per Capita Personal Income
- Earnings by Place of Residence
- Per Capita Earnings by Residence
- Wage & Salaried Workers - Earnings
- Wage & Salaried Workers – Jobs
- Wage & Salaried Workers - Wages

Group 2 – These sectors reflect how the economy is behaving. Small businesses and the construction and retail industries are extremely reactive to the “flow of money” coming into an area. They typically grow or decline in direct proportion to the condition of the economy. There are, of course, exceptions. Areas, which have become destinations for retirement age individuals will have high growth numbers in both construction and retail, while they might not have a strong economy.

- Non-Farm Proprietors - Earnings
- Non-Farm Proprietors - Jobs
- Non-Farm Proprietors - Wages
- Construction - Worker Earnings
- Construction - Jobs

Construction - Wages  
Retail - Worker Earnings  
Retail - Jobs  
Retail - Wages

Group 3 – These sectors are negative sectors. Growth in these reflects a poor economy.

Per Capita Income Maintenance (Welfare)  
Actual Per Capita Income Maintenance (Welfare)  
Per Capita Medical Assistance for the Poor - (Medicaid)  
Actual Per Capita Medical Assistance for the Poor – (Medicaid)

“Redundancy” and “counter balances” are built into the criteria, which compensate for anomalies that might occur in one or two of the items.

As an example, if an area has a very high percentage growth rate in Per Capita Income Maintenance (PCIM), it might mean the economy is on decline. However, percentages are funny things and can sometimes be misleading. It is much easier for an area with a low basis to have high percentage increases than an area with a high basis.

As an example, the Boulder, CO MSA had the fastest growth rate in PCIM for the ten years from 2013 to 2022, but the area ranked 383<sup>rd</sup> (2<sup>nd</sup> lowest) in the actual PCIM. While the rate of growth is brisk, “twice nothing is still nothing.”

The reverse also occurs. The Pine Bluff, AR MSA ranked 370<sup>th</sup> for the rate of growth, but has the 24<sup>th</sup> highest PCIM.

Of course, there are the extremes. The Lawrence, KS MSA had the 2<sup>nd</sup> slowest growth rate and the 7<sup>th</sup> lowest PCIM, the best of both worlds. Unfortunately, the Danville, IL MSA had the 27<sup>th</sup> fastest growth rate and the 6<sup>th</sup> highest PCIM.

If only these criteria are used, the MSA’s would be ranked in the following order: Lawrence, Boulder, Pine Bluff, and Danville.

POLICOM is also aware of anomalies in labor data. It has found economies, which are on decline, sometimes have a very high growth rate in the number of people employed in Retail Trade. Retail is a reactive industry, which grows and declines in direct proportion to the condition of the economy.

So how can retail jobs grow in a declining economy? It is because labor data counts full and part-time jobs all as “jobs.” This means two part-time jobs are counted as two jobs in the data.



When an area is in decline, retailers switch from full-time workers to part-time workers. A small retailer might have four full time workers. If the retailer lays-off two full-time people but hires three part-timers to replace them, there is a statistical gain in the labor data of one job. The retailer now has five workers, in the data, which is a 25% increase from when there were four full-timers.

To counter balance or compensate, the total earnings and wages are included. Under the above scenario, both earnings and wages will decline; properly adjusting downward the area in the rankings.

#### **Time Periods:**

The average annual increase is calculated for each of the items for three periods.

**Last five years: 2018-2022 – Weighted once.**

**Last ten years: 2013-2022 – Weighted twice.**

**Previous Ten Years: 2003-2012 – Weighted once.**

The percentage increases are adjusted mathematically for consistency.

The growth rates are then ranked. The rankings are totaled. The areas are then ranked for economic strength based on their total overall score.

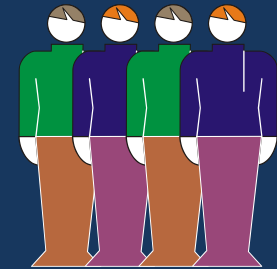
#### **Consistency of Growth:**

Simply identifying the areas that have the fastest or slowest growth rates is insufficient when trying to determine the character of a local economy. The rate, consistency, or stability of the growth is equally important.

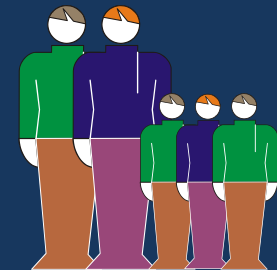
Areas with unstable, boom and bust economies are difficult places to conduct business. Residents of these areas are subject to economic uncertainty and stress.

A merchant may lease extra floor space following three or four great years, only to go bankrupt after a subsequent economic decline. Residents might make long term financial commitments based upon rapid increases in earnings and employment, only to lose everything due to a sudden downturn causing massive layoffs.

#### **Four full time jobs**



**If two full-time workers are replaced by three part-time workers ...**



**there is a 25% increase in employment.**

To better understand the nature of economic stability, we will examine the consistency of the construction industry for three areas, which had the same average annual percentage increase.

The first graph depicts a Mythical Area, which had an average annual percentage increase in Construction Employment of 5.4% from 2013 through 2022.

Mythical Area had a 5.4% increase in 2014. In 2015, it again had a 5.4% increase. Each year, the area increased exactly 5.4%. This means construction employers every year increased the number of people they employed by 5.4%.

As a result, by averaging the ten-year history, the Mythical Area obviously had a 5.4% average annual increase (AAI).

Most importantly, the area had perfect consistency as depicted by the straight horizontal line on the graph. The flow of money into the area, which supports this industry, grew in an absolutely consistent manner. This is a perfect situation. However, this is mythical, not reality.

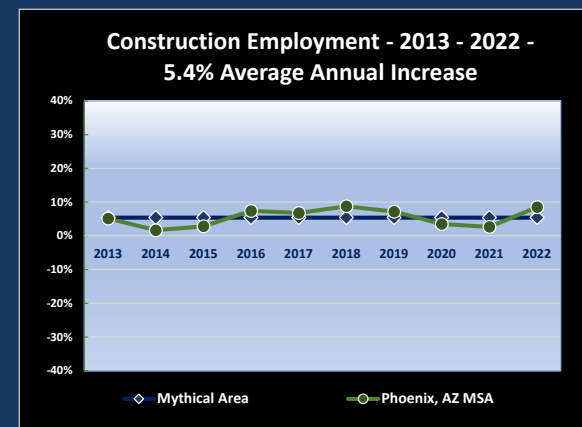
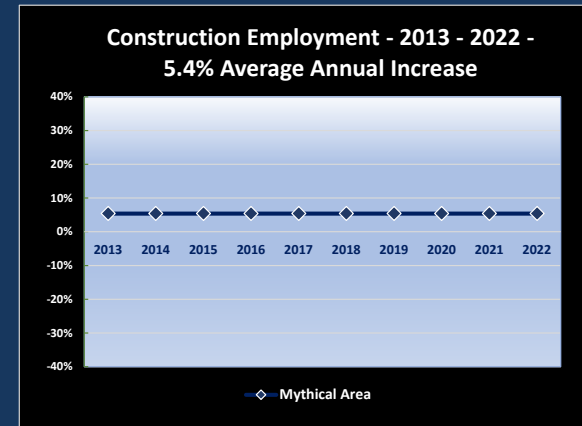
Let us examine the economic stability of the Phoenix, AZ MSA. Phoenix, during the same ten years, had an AAI in Construction Jobs of 5.4%. This rate of growth ranked 32<sup>nd</sup> among the 384 metropolitan areas for the ten-year period.

The graph shows the percentage increase or decline each year. You can see the rate of growth is not absolutely stable.

While over the ten years it averages 5.4%, there are obvious fluctuations year by year. In 2014, employment increased only 1.7%, in 2018, it increased 8.8%, and in 2021 construction employment grew by only 2.7%. However, the average annual increase over the period was 5.4%.

For the ten years, rate of growth is not nearly as stable as the Mythical Area. The growth line is not straight but goes up and down, a little bit.

While the rate of growth of construction jobs for Phoenix is not absolutely consistent, it is considerably more stable than the Lake Charles, LA Metropolitan Area.



As with Phoenix and the Mythical Area, Lake Charles had an average annual increase of 5.4% over the ten years, ranking 33<sup>rd</sup> among the 384 Metropolitan Areas. As you can see in the graph, the rate of growth was extremely volatile.

In 2014, Lake Charles increased 34.3%, the next year only 1.3%, then up again by 30.0%, then up 26.4%. In 2019, the area declined by 10.6%, then down 30.0%, then up 5.00%, then down 17.1%. The line looks like the area is in “cardiac arrest.”

Yes, believe it or not, the average of all of these years is 5.4%. How it happened is considerably different from Phoenix.

Obviously, simply relying upon economic growth percentages is not sufficient in order to determine the “character” of a local economy. Economic stability should be considered.

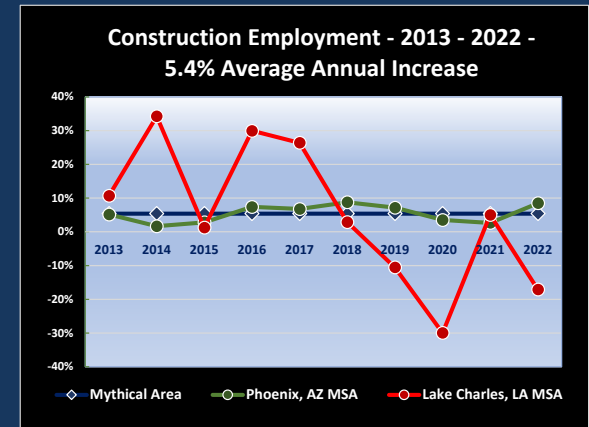
To measure economic stability, the difference or deviation in each successive year's percentage of growth is calculated (absolute number) and averaged, creating the Average Deviation from Previous Year (DEV).

To determine the measurable consistency of growth, the DEV is subtracted from the AAI. This number is used for POLICOM's economic strength rankings. Inconsistent economies area ranked lower than consistent economies.

After adjusting for consistency of Construction Employment, Phoenix ranked 19<sup>th</sup> and Lake Charles 302<sup>nd</sup>.

The following are the economic strength rankings for the 384 Metropolitan Statistical Areas and the 543 Micropolitan Statistical Areas. This is the 20<sup>th</sup> year POLICOM has ranked the areas using similar methodology.

**POLICOM creates the economic strength rankings for its internal research purposes. The publication of the economic strength rankings by POLICOM is the result of “popular demand.” Reliance upon the rankings for any purpose is solely at the discretion of the reader and POLICOM assumes no liability.**





384 Metropolitan Areas	2024	2023	2022	2021	2020	2019	2018	2017	2016	2015	384 Metropolitan Areas	2024	2023	2022	2021	2020	2019	2018	2017	2016	2015
Abilene, TX (MSA)	281	304	295	325	314	308	257	199	242	271	Salt Lake City, UT (MSA)	1	7	3	5	5	6	8	29	3	9
Akron, OH (MSA)	118	103	119	137	140	120	137	107	111	128	Austin-Round Rock-Georgetown, TX (MSA)	2	2	2	2	3	3	1	1	2	3
Albany, GA (MSA)	373	356	361	367	372	370	370	377	348	350	Nashville-Davidson--Murfreesboro--Franklin, TN (MSA)	3	1	4	4	1	1	4	10	10	7
Albany-Lebanon, OR (MSA)	267	298	225	200	228	253	284	330	363	371	Raleigh-Cary, NC (MSA)	4	5	14	7	11	9	9	42	21	14
Albany-Schenectady-Troy, NY (MSA)	48	40	65	51	46	57	22	27	17	34	Huntsville, AL (MSA)	5	4	7	17	20	18	34	38	35	23
Albuquerque, NM (MSA)	266	289	234	245	283	288	316	249	200	144	Sioux Falls, SD (MSA)	6	3	8	10	9	17	26	32	24	8
Alexandria, LA (MSA)	207	217	198	234	212	181	183	132	169	160	Madison, WI (MSA)	7	8	10	27	10	12	13	12	16	16
Allentown-Bethlehem-Easton, PA-NJ (MSA)	180	163	132	116	95	86	72	65	70	30	Dallas-Fort Worth-Arlington, TX (MSA)	8	14	9	16	21	20	7	4	4	13
Altoona, PA (MSA)	301	300	262	213	215	223	214	206	243	207	Indianapolis-Carmel-Anderson, IN (MSA)	9	10	18	22	14	8	6	15	40	49
Amarillo, TX (MSA)	164	131	195	223	188	213	151	105	90	127	Jacksonville, FL (MSA)	10	11	28	66	61	78	112	157	147	157
Ames, IA (MSA)	239	212	268	261	248	230	212	219	198	177	Manchester-Nashua, NH (MSA)	11	16	19	37	29	43	44	41	20	51
Anchorage, AK (MSA)	130	150	137	132	112	88	85	25	31	43	Phoenix-Mesa-Chandler, AZ (MSA)	12	37	13	31	53	64	78	85	80	77
Ann Arbor, MI (MSA)	73	91	104	99	110	133	122	150	157	172	Olympia-Lacey-Tumwater, WA (MSA)	13	9	11	15	28	24	37	68	87	81
Anniston-Oxford, AL (MSA)	363	346	365	378	380	372	379	379	374	364	Boise City, ID (MSA)	14	17	23	9	30	39	56	82	126	161
Appleton, WI (MSA)	54	79	81	83	89	100	89	138	171	156	Crestview-Fort Walton Beach-Destin, FL (MSA)	15	13	20	40	74	85	131	160	185	179
Asheville, NC (MSA)	154	175	184	172	198	227	262	301	336	334	Knoxville, TN (MSA)	16	12	26	64	33	46	73	129	113	94
Athens-Clarke County, GA (MSA)	178	171	199	203	180	184	171	234	251	263	Bend, OR (MSA)	17	22	15	12	57	77	128	179	227	265
Atlanta-Sandy Springs-Alpharetta, GA (MSA)	33	19	17	30	12	10	15	20	48	61	Fargo, ND-MN (MSA)	18	34	42	53	44	25	21	8	5	17
Atlantic City-Hammonton, NJ (MSA)	283	283	272	236	239	272	286	257	218	204	Lancaster, PA (MSA)	19	39	40	28	32	30	42	89	100	121
Auburn-Opelika, AL (MSA)	151	153	181	198	191	164	211	271	269	227	Columbus, OH (MSA)	20	24	27	35	23	22	16	21	11	11
Augusta-Richmond County, GA-SC (MSA)	181	151	152	167	153	147	158	187	193	170	Des Moines-West Des Moines, IA (MSA)	21	32	32	44	24	13	11	14	14	4
Austin-Round Rock-Georgetown, TX (MSA)	2	2	2	2	3	3	1	1	2	3	Durham-Chapel Hill, NC (MSA)	22	43	60	78	91	65	65	83	116	100
Bakersfield, CA (MSA)	144	132	98	133	128	122	120	62	50	67	Provo-Orem, UT (MSA)	23	27	38	24	42	41	48	113	101	152
Baltimore-Columbia-Towson, MD (MSA)	65	65	39	25	25	23	33	23	15	22	Denver-Aurora-Lakewood, CO (MSA)	24	21	25	63	36	28	10	6	7	20
Bangor, ME (MSA)	264	281	282	289	288	297	291	298	262	245	Tampa-St. Petersburg-Clearwater, FL (MSA)	25	46	63	54	90	90	93	112	115	132
Barnstable Town, MA (MSA)	158	120	122	68	80	84	92	94	127	133	The Villages, FL (MSA)	26	72	135	147	176	182	223	216	166	198
Baton Rouge, LA (MSA)	208	197	168	136	73	53	63	30	26	18	Seattle-Tacoma-Bellevue, WA (MSA)	27	20	1	1	2	2	3	13	1	2
Battle Creek, MI (MSA)	319	332	325	312	307	292	317	344	311	303	Bellingham, WA (MSA)	28	51	33	20	38	51	84	103	95	80
Bay City, MI (MSA)	347	352	370	376	376	374	375	376	366	365	Gainesville, GA (MSA)	29	58	46	81	94	118	129	153	187	238
Beaumont-Port Arthur, TX (MSA)	343	327	308	274	280	313	275	213	180	190	Charlotte-Concord-Gastonia, NC-SC (MSA)	30	30	31	6	26	34	58	56	39	15
Beckley, WV (MSA)	384	384	384	383	384	383	383	382	345	291	Naples-Marco Island, FL (MSA)	31	48	73	105	102	134	108	93	154	197
Bellingham, WA (MSA)	28	51	33	20	38	51	84	103	95	80	Charleston-North Charleston, SC (MSA)	32	35	22	8	15	31	54	69	55	32
Bend, OR (MSA)	17	22	15	12	57	77	128	179	227	265	Atlanta-Sandy Springs-Alpharetta, GA (MSA)	33	19	17	30	12	10	15	20	48	61
Billings, MT (MSA)	81	74	120	143	98	87	55	97	128	120	San Jose-Sunnyvale-Santa Clara, CA (MSA)	34	6	5	3	4	4	5	7	25	58

384 Metropolitan Areas	2024	2023	2022	2021	2020	2019	2018	2017	2016	2015	384 Metropolitan Areas	2024	2023	2022	2021	2020	2019	2018	2017	2016	2015
Binghamton, NY (MSA)	314	271	304	278	293	298	289	252	231	224	Fayetteville-Springdale-Rogers, AR (MSA)	35	31	59	94	70	56	35	47	41	45
Birmingham-Hoover, AL (MSA)	38	61	76	108	101	115	91	86	96	72	Portland-Vancouver-Hillsboro, OR-WA (MSA)	36	26	6	11	6	11	53	66	38	41
Bismarck, ND (MSA)	123	78	107	95	49	52	23	9	32	19	Kansas City, MO-KS (MSA)	37	25	57	69	60	58	49	24	18	28
Blacksburg-Christiansburg, VA (MSA)	315	290	302	262	235	265	249	240	239	208	Birmingham-Hoover, AL (MSA)	38	61	76	108	101	115	91	86	96	72
Bloomington, IL (MSA)	210	199	205	210	222	209	169	152	135	93	Portland-South Portland, ME (MSA)	39	28	35	42	43	47	67	90	124	106
Bloomington, IN (MSA)	224	191	194	201	234	229	269	312	299	268	Burlington-South Burlington, VT (MSA)	40	38	45	60	55	45	32	57	34	26
Bloomsburg-Berwick, PA (MSA)	217	209	190	187	196	174	205	170	163	135	San Diego-Chula Vista-Carlsbad, CA (MSA)	41	23	12	18	8	7	14	5	13	27
Boise City, ID (MSA)	14	17	23	9	30	39	56	82	126	161	Wilmington, NC (MSA)	42	71	121	154	168	156	168	190	136	101
Boston-Cambridge-Newton, MA-NH (MSA)	45	15	30	23	22	29	29	16	19	33	Bremerton-Silverdale-Port Orchard, WA (MSA)	43	54	41	26	65	91	130	162	175	148
Boulder, CO (MSA)	47	53	49	46	67	63	43	40	75	95	Idaho Falls, ID (MSA)	44	62	66	90	109	108	87	118	140	178
Bowling Green, KY (MSA)	274	310	256	230	263	180	213	163	182	230	Boston-Cambridge-Newton, MA-NH (MSA)	45	15	30	23	22	29	29	16	19	33
Bremerton-Silverdale-Port Orchard, WA (MSA)	43	54	41	26	65	91	130	162	175	148	Sacramento-Roseville-Folsom, CA (MSA)	46	33	16	13	16	15	45	72	67	64
Bridgeport-Stamford-Norwalk, CT (MSA)	141	162	166	144	113	142	100	52	69	88	Boulder, CO (MSA)	47	53	49	46	67	63	43	40	75	95
Brownsville-Harlingen, TX (MSA)	312	317	318	321	337	304	266	244	265	241	Albany-Schenectady-Troy, NY (MSA)	48	40	65	51	46	57	22	27	17	34
Brunswick, GA (MSA)	288	324	349	326	315	339	363	368	361	349	San Francisco-Oakland-Berkeley, CA (MSA)	49	52	55	32	35	19	19	2	28	36
Buffalo-Cheektowaga, NY (MSA)	143	152	146	117	127	111	95	91	78	71	Omaha-Council Bluffs, NE-IA (MSA)	50	59	77	104	88	81	47	58	12	5
Burlington, NC (MSA)	248	253	247	310	356	358	354	364	376	375	Missoula, MT (MSA)	51	29	88	84	83	75	144	188	226	199
Burlington-South Burlington, VT (MSA)	40	38	45	60	55	45	32	57	34	26	Colorado Springs, CO (MSA)	52	36	48	77	84	79	52	54	99	83
California-Lexington Park, MD (MSA)	71	85	44	45	40	50	86	63	45	12	Coeur d'Alene, ID (MSA)	53	49	78	107	135	150	188	258	310	317
Canton-Massillon, OH (MSA)	316	318	331	314	324	315	314	299	301	322	Appleton, WI (MSA)	54	79	81	83	89	100	89	138	171	156
Cape Coral-Fort Myers, FL (MSA)	61	87	108	65	78	107	159	176	181	229	Palm Bay-Melbourne-Titusville, FL (MSA)	55	67	101	131	175	199	252	297	313	286
Cape Girardeau, MO-IL (MSA)	289	287	284	277	257	275	240	248	240	210	Houston-The Woodlands-Sugar Land, TX (MSA)	56	68	103	80	48	38	24	11	6	10
Carbondale-Marion, IL (MSA)	369	359	352	354	339	309	282	303	223	200	Minneapolis-St. Paul-Bloomington, MN-WI (MSA)	57	70	37	34	34	35	28	46	37	60
Carson City, NV (MSA)	238	261	296	287	262	279	298	273	260	233	Spokane-Spokane Valley, WA (MSA)	58	55	62	67	115	126	161	182	170	187
Casper, WY (MSA)	204	214	223	181	126	130	127	78	65	86	North Port-Sarasota-Bradenton, FL (MSA)	59	83	97	120	148	173	210	236	234	260
Cedar Rapids, IA (MSA)	160	185	207	184	131	99	115	74	51	53	Fort Collins, CO (MSA)	60	44	43	56	59	37	31	44	92	116
Chambersburg-Waynesboro, PA (MSA)	229	242	217	214	202	194	227	183	214	275	Cape Coral-Fort Myers, FL (MSA)	61	87	108	65	78	107	159	176	181	229
Champaign-Urbana, IL (MSA)	168	189	192	183	163	123	74	110	188	213	Cincinnati, OH-KY-IN (MSA)	62	45	34	47	41	60	38	35	44	48
Charleston, WV (MSA)	324	325	327	319	289	299	294	221	196	162	Orlando-Kissimmee-Sanford, FL (MSA)	63	64	72	41	71	68	102	96	123	141
Charleston-North Charleston, SC (MSA)	32	35	22	8	15	31	54	69	55	32	Kennewick-Richland, WA (MSA)	64	66	61	48	68	62	82	80	59	37

384 Metropolitan Areas	2024	2023	2022	2021	2020	2019	2018	2017	2016	2015	384 Metropolitan Areas	2024	2023	2022	2021	2020	2019	2018	2017	2016	2015
Charlotte-Concord-Gastonia, NC-SC (MSA)	30	30	31	6	26	34	58	56	39	15	Baltimore-Columbia-Towson, MD (MSA)	65	65	39	25	25	23	33	23	15	22
Charlottesville, VA (MSA)	127	92	70	52	47	48	79	61	29	21	San Luis Obispo-Paso Robles, CA (MSA)	66	18	21	14	13	14	17	19	47	63
Chattanooga, TN-GA (MSA)	97	94	84	123	120	117	143	136	156	143	Ogden-Clearfield, UT (MSA)	67	84	64	82	82	92	113	114	106	129
Cheyenne, WY (MSA)	145	119	117	139	162	136	105	81	68	62	Rapid City, SD (MSA)	68	60	111	162	142	132	118	131	152	137
Chicago-Naperville-Elgin, IL-IN-WI (MSA)	165	112	83	96	85	76	40	43	63	75	Mount Vernon-Anacortes, WA (MSA)	69	73	56	29	69	96	149	214	213	240
Chico, CA (MSA)	245	219	163	122	143	157	174	211	236	279	Grand Rapids-Kentwood, MI (MSA)	70	98	91	79	66	71	64	88	110	146
Cincinnati, OH-KY-IN (MSA)	62	45	34	47	41	60	38	35	44	48	California-Lexington Park, MD (MSA)	71	85	44	45	40	50	86	63	45	12
Clarksville, TN-KY (MSA)	117	154	157	211	173	166	203	191	146	131	Harrisburg-Carlisle, PA (MSA)	72	99	79	85	111	94	60	33	43	31
Cleveland, TN (MSA)	233	286	313	349	323	314	264	196	165	203	Ann Arbor, MI (MSA)	73	91	104	99	110	133	122	150	157	172
Cleveland-Elyria, OH (MSA)	176	156	155	138	137	125	135	146	130	119	Daphne-Fairhope-Foley, AL (MSA)	74	95	124	129	156	144	176	172	161	173
Coeur d'Alene, ID (MSA)	53	49	78	107	135	150	188	258	310	317	Green Bay, WI (MSA)	75	100	92	101	72	59	51	48	42	56
College Station-Bryan, TX (MSA)	111	116	151	127	105	93	77	59	74	107	Santa Rosa-Petaluma, CA (MSA)	76	41	29	21	19	26	18	49	89	130
Colorado Springs, CO (MSA)	52	36	48	77	84	79	52	54	99	83	Santa Maria-Santa Barbara, CA (MSA)	77	47	52	36	45	40	61	53	97	87
Columbia, MO (MSA)	138	128	128	157	141	105	90	73	82	84	Savannah, GA (MSA)	78	89	113	97	63	80	103	102	122	123
Columbia, SC (MSA)	110	96	87	109	100	61	75	75	112	117	Kalamazoo-Portage, MI (MSA)	79	93	109	91	122	168	222	285	230	278
Columbus, GA-AL (MSA)	342	316	329	364	355	328	303	227	189	150	Washington-Arlington-Alexandria, DC-VA-MD-WV (MSA)	80	42	36	57	18	16	20	18	9	1
Columbus, IN (MSA)	186	177	170	160	157	178	160	155	192	236	Billings, MT (MSA)	81	74	120	143	98	87	55	97	128	120
Columbus, OH (MSA)	20	24	27	35	23	22	16	21	11	11	Salem, OR (MSA)	82	86	58	86	119	154	208	268	220	250
Corpus Christi, TX (MSA)	326	339	292	224	189	140	88	76	49	59	Eau Claire, WI (MSA)	83	111	125	134	124	127	126	79	91	74
Corvallis, OR (MSA)	103	88	136	130	146	148	185	233	249	231	New York-Newark-Jersey City, NY-NJ-PA (MSA)	84	50	51	39	52	70	39	77	27	42
Crestview-Fort Walton Beach-Destin, FL (MSA)	15	13	20	40	74	85	131	160	185	179	Oxnard-Thousand Oaks-Ventura, CA (MSA)	85	69	69	50	50	42	41	64	94	57
Cumberland, MD-WV (MSA)	378	376	360	358	361	362	356	337	290	237	Trenton-Princeton, NJ (MSA)	86	109	94	111	133	103	70	87	77	55
Dallas-Fort Worth-Arlington, TX (MSA)	8	14	9	16	21	20	7	4	4	13	Winchester, VA-WV (MSA)	87	75	47	103	86	97	107	101	109	99
Dalton, GA (MSA)	271	314	316	311	277	263	277	341	316	345	St. George, UT (MSA)	88	82	96	119	150	186	232	231	253	308
Danville, IL (MSA)	377	381	382	382	381	377	376	378	378	381	Louisville/Jefferson County, KY-IN (MSA)	89	107	74	76	104	109	80	84	134	124
Daphne-Fairhope-Foley, AL (MSA)	74	95	124	129	156	144	176	172	161	173	Milwaukee-Waukesha, WI (MSA)	90	117	112	115	96	89	71	50	93	82
Davenport-Moline-Rock Island, IA-IL (MSA)	257	230	214	202	207	177	209	156	137	111	Greeley, CO (MSA)	91	108	90	62	77	54	46	60	72	104
Dayton-Kettering, OH (MSA)	147	136	144	163	182	191	180	207	207	205	Miami-Fort Lauderdale-Pompano Beach, FL (MSA)	92	80	100	61	81	73	97	135	76	112
Decatur, AL (MSA)	295	250	294	357	375	371	366	362	341	351	Stockton, CA (MSA)	93	63	50	55	76	74	106	154	186	216
Decatur, IL (MSA)	317	322	328	302	298	287	293	250	279	288	Port St. Lucie, FL (MSA)	94	142	174	171	211	258	267	308	319	331
Deltona-Daytona Beach-Ormond Beach, FL (MSA)	184	213	212	212	253	284	296	347	337	355	Poughkeepsie-Newburgh-Middletown, NY (MSA)	95	105	105	74	97	na	na	na	na	na
Denver-Aurora-Lakewood, CO (MSA)	24	21	25	63	36	28	10	6	7	20	Fort Wayne, IN (MSA)	96	127	142	149	172	188	194	195	222	262
Des Moines-West Des Moines, IA (MSA)	21	32	32	44	24	13	11	14	14	4	Chattanooga, TN-GA (MSA)	97	94	84	123	120	117	143	136	156	143
Detroit-Warren-Dearborn, MI (MSA)	146	167	131	112	108	119	114	134	150	188	Hilton Head Island-Bluffton, SC (MSA)	98	139	204	166	170	143	141	149	155	194

384 Metropolitan Areas	2024	2023	2022	2021	2020	2019	2018	2017	2016	2015	384 Metropolitan Areas	2024	2023	2022	2021	2020	2019	2018	2017	2016	2015
Dothan, AL (MSA)	254	243	274	303	347	342	340	317	285	255	Lincoln, NE (MSA)	99	129	138	125	93	104	69	67	88	91
Dover, DE (MSA)	243	245	203	254	275	277	244	200	195	154	Lexington-Fayette, KY (MSA)	100	165	161	148	138	102	81	99	64	79
Dubuque, IA (MSA)	183	198	233	246	249	250	235	235	190	158	Iowa City, IA (MSA)	101	76	95	92	54	27	36	36	54	38
Duluth, MN-WI (MSA)	305	319	341	338	330	333	320	272	246	285	New Haven-Milford, CT (MSA)	102	115	99	114	117	98	94	51	85	70
Durham-Chapel Hill, NC (MSA)	22	43	60	78	91	65	65	83	116	100	Corvallis, OR (MSA)	103	88	136	130	146	148	185	233	249	231
East Stroudsburg, PA (MSA)	325	320	311	273	279	273	301	316	338	335	Pensacola-Ferry Pass-Brent, FL (MSA)	104	113	158	156	197	226	261	225	277	252
Eau Claire, WI (MSA)	83	111	125	134	124	127	126	79	91	74	Sebastian-Vero Beach, FL (MSA)	105	161	208	216	225	248	256	264	303	347
El Centro, CA (MSA)	336	342	321	298	309	311	338	328	329	336	St. Louis, MO-IL (MSA)	106	104	110	142	103	113	101	45	104	73
El Paso, TX (MSA)	270	279	242	242	232	244	219	174	132	110	Springfield, MO (MSA)	107	140	150	185	185	205	192	241	209	220
Elizabethtown-Fort Knox, KY (MSA)	293	293	289	284	278	291	332	343	304	242	Vallejo, CA (MSA)	108	57	24	19	17	21	27	39	73	97
Elkhart-Goshen, IN (MSA)	241	193	183	194	205	197	224	282	326	306	Logan, UT-ID (MSA)	109	56	68	110	132	135	166	223	284	283
Elmira, NY (MSA)	320	277	326	316	336	341	312	306	248	281	Columbia, SC (MSA)	110	96	87	109	100	61	75	75	112	117
Enid, OK (MSA)	364	368	362	347	295	266	184	166	na	na	College Station-Bryan, TX (MSA)	111	116	151	127	105	93	77	59	74	107
Erie, PA (MSA)	371	372	366	353	357	355	345	323	334	339	Pittsburgh, PA (MSA)	112	135	127	71	87	82	62	34	36	24
Eugene-Springfield, OR (MSA)	173	178	145	141	174	206	245	278	278	316	Wenatchee, WA (MSA)	113	164	102	121	134	163	191	202	264	314
Evansville, IN-KY (MSA)	235	251	246	243	260	259	243	208	206	211	Hartford-East Hartford-Middletown, CT (MSA)	114	90	93	73	58	67	66	31	33	44
Fairbanks, AK (MSA)	187	203	196	190	167	171	186	120	81	54	Riverside-San Bernardino-Ontario, CA (MSA)	115	77	54	58	62	69	153	169	148	176
Fargo, ND-MN (MSA)	18	34	42	53	44	25	21	8	5	17	Oshkosh-Neenah, WI (MSA)	116	114	130	113	107	83	76	128	105	102
Farmington, NM (MSA)	381	382	377	359	326	335	358	336	328	320	Clarksville, TN-KY (MSA)	117	154	157	211	173	166	203	191	146	131
Fayetteville, NC (MSA)	228	256	250	252	252	243	220	171	133	85	Akron, OH (MSA)	118	103	119	137	140	120	137	107	111	128
Fayetteville-Springdale-Rogers, AR (MSA)	35	31	59	94	70	56	35	47	41	45	Longview, WA (MSA)	119	173	202	217	241	240	268	304	228	272
Flagstaff, AZ (MSA)	244	305	237	195	164	202	278	245	263	299	Killeen-Temple, TX (MSA)	120	134	140	165	144	112	116	115	61	40
Flint, MI (MSA)	357	367	356	329	340	356	361	369	377	376	Great Falls, MT (MSA)	121	194	220	233	200	185	165	151	178	149
Florence, SC (MSA)	297	296	286	293	331	336	327	332	314	302	Philadelphia-Camden-Wilmington, PA-NJ-DE-MD (MSA)	122	101	82	70	51	55	25	28	22	25
Florence-Muscle Shoals, AL (MSA)	251	276	320	345	342	329	339	318	273	259	Bismarck, ND (MSA)	123	78	107	95	49	52	23	9	32	19
Fond du Lac, WI (MSA)	161	170	188	177	199	215	202	260	298	289	Greenville, NC (MSA)	124	137	177	178	218	235	238	247	283	256
Fort Collins, CO (MSA)	60	44	43	56	59	37	31	44	92	116	San Antonio-New Braunfels, TX (MSA)	125	118	86	43	37	33	12	17	8	6
Fort Smith, AR-OK (MSA)	348	350	359	370	366	367	372	372	346	358	Oklahoma City, OK (MSA)	126	160	153	155	129	101	68	26	30	68
Fort Wayne, IN (MSA)	96	127	142	149	172	188	194	195	222	262	Charlottesville, VA (MSA)	127	92	70	52	47	48	79	61	29	21
Fresno, CA (MSA)	134	130	71	72	92	116	152	161	153	196	Myrtle Beach-Conway-North Myrtle Beach, SC-NC (MSA)	128	123	172	168	192	198	254	253	297	309
Gadsden, AL (MSA)	376	371	376	375	368	365	367	371	362	343	Rochester, MN (MSA)	129	110	106	124	130	149	119	143	184	212
Gainesville, FL (MSA)	131	122	171	186	204	203	182	212	229	235	Anchorage, AK (MSA)	130	150	137	132	112	88	85	25	31	43
Gainesville, GA (MSA)	29	58	46	81	94	118	129	153	187	238	Gainesville, FL (MSA)	131	122	171	186	204	203	182	212	229	235
Gettysburg, PA (MSA)	291	282	261	244	261	242	239	259	244	298	Napa, CA (MSA)	132	81	75	38	7	5	2	3	23	50
Glens Falls, NY (MSA)	232	192	235	215	217	208	234	222	174	183	Twin Falls, ID (MSA)	133	176	148	199	219	212	231	na	na	na
Goldsboro, NC (MSA)	321	341	343	362	378	379	355	363	349	330	Fresno, CA (MSA)	134	130	71	72	92	116	152	161	153	196
Grand Forks, ND-MN (MSA)	205	200	169	174	177	169	164	165	210	261	Richmond, VA (MSA)	135	97	80	102	56	44	30	22	56	47
Grand Island, NE (MSA)	273	278	300	279	246	262	228	276	237	225	Wausau-Weston, WI (MSA)	136	147	133	161	171	159	162	124	142	145
Grand Junction, CO (MSA)	252	269	279	297	294	310	285	325	295	318	Reno, NV (MSA)	137	141	179	106	149	139	197	242	245	223
Grand Rapids-Kentwood, MI (MSA)	70	98	91	79	66	71	64	88	110	146	Columbia, MO (MSA)	138	128	128	157	141	105	90	73	82	84
Grants Pass, OR (MSA)	177	157	134	189	223	249	309	359	375	374	Waco, TX (MSA)	139	125	115	140	118	131	110	122	179	153
Great Falls, MT (MSA)	121	194	220	233	200	185	165	151	178	149	Tyler, TX (MSA)	140	190	154	164	145	129	83	70	131	167
Greeley, CO (MSA)	91	108	90	62	77	54	46	60	72	104	Bridgeport-Stamford-Norwalk, CT (MSA)	141	162	166	144	113	142	100	52	69	88



384 Metropolitan Areas	2024	2023	2022	2021	2020	2019	2018	2017	2016	2015	384 Metropolitan Areas	2024	2023	2022	2021	2020	2019	2018	2017	2016	2015
Green Bay, WI (MSA)	75	100	92	101	72	59	51	48	42	56	Los Angeles-Long Beach-Anaheim, CA (MSA)	142	106	53	33	27	32	59	71	84	105
Greensboro-High Point, NC (MSA)	220	226	245	255	285	281	255	274	259	243	Buffalo-Cheektowaga, NY (MSA)	143	152	146	117	127	111	95	91	78	71
Greenville, NC (MSA)	124	137	177	178	218	235	238	247	283	256	Bakersfield, CA (MSA)	144	132	98	133	128	122	120	62	50	67
Greenville-Anderson, SC (MSA)	170	180	185	175	190	196	163	167	172	217	Cheyenne, WY (MSA)	145	119	117	139	162	136	105	81	68	62
Gulfport-Biloxi, MS (MSA)	296	306	319	350	351	349	360	352	288	239	Detroit-Warren-Dearborn, MI (MSA)	146	167	131	112	108	119	114	134	150	188
Hagerstown-Martinsburg, MD-WV (MSA)	255	244	229	232	195	172	179	175	159	115	Dayton-Kettering, OH (MSA)	147	136	144	163	182	191	180	207	207	205
Hammond, LA (MSA)	340	348	339	332	348	348	365	305	241	273	St. Cloud, MN (MSA)	148	169	193	207	206	222	250	232	201	257
Hanford-Corcoran, CA (MSA)	331	328	278	292	297	282	318	313	320	304	La Crosse-Onalaska, WI-MN (MSA)	149	124	139	150	151	153	125	121	177	138
Harrisburg-Carlisle, PA (MSA)	72	99	79	85	111	94	60	33	43	31	Honolulu, HI (MSA)	150	143	67	49	31	36	50	37	58	66
Harrisonburg, VA (MSA)	259	252	249	248	269	255	226	197	202	193	Auburn-Opelika, AL (MSA)	151	153	181	198	191	164	211	271	269	227
Hartford-East Hartford-Middletown, CT (MSA)	114	90	93	73	58	67	66	31	33	44	Medford, OR (MSA)	152	159	114	126	159	189	242	300	322	301
Hattiesburg, MS (MSA)	275	299	314	295	240	211	175	198	254	226	Providence-Warwick, RI-MA (MSA)	153	126	126	135	139	145	109	55	86	52
Hickory-Lenoir-Morganton, NC (MSA)	262	291	303	328	354	366	364	373	380	377	Asheville, NC (MSA)	154	175	184	172	198	227	262	301	336	334
Hilton Head Island-Bluffton, SC (MSA)	98	139	204	166	170	143	141	149	155	194	Lewiston, ID-WA (MSA)	155	168	149	182	201	183	241	309	302	293
Hinesville, GA (MSA)	334	329	310	360	352	346	343	357	332	310	Johnson City, TN (MSA)	156	188	236	275	300	293	307	338	307	267
Homosassa Springs, FL (MSA)	256	267	322	317	344	347	347	367	352	352	Yuba City, CA (MSA)	157	148	85	98	99	121	181	237	274	246
Honolulu, HI (MSA)	150	143	67	49	31	36	50	37	58	66	Barnstable Town, MA (MSA)	158	120	122	68	80	84	92	94	127	133
Hot Springs, AR (MSA)	329	312	287	305	299	317	322	292	325	276	Sheboygan, WI (MSA)	159	146	123	88	125	106	134	192	191	191
Houma-Thibodaux, LA (MSA)	346	354	333	306	268	251	187	95	52	96	Cedar Rapids, IA (MSA)	160	185	207	184	131	99	115	74	51	53
Houston-The Woodlands-Sugar Land, TX (MSA)	56	68	103	80	48	38	24	11	6	10	Fond du Lac, WI (MSA)	161	170	188	177	199	215	202	260	298	289
Huntington-Ashland, WV-KY-OH (MSA)	332	340	351	340	335	321	300	228	232	201	Las Vegas-Henderson-Paradise, NV (MSA)	162	183	159	118	147	170	157	181	141	136
Huntsville, AL (MSA)	5	4	7	17	20	18	34	38	35	23	Prescott Valley-Prescott, AZ (MSA)	163	204	162	176	184	220	288	302	359	369
Idaho Falls, ID (MSA)	44	62	66	90	109	108	87	118	140	178	Amarillo, TX (MSA)	164	131	195	223	188	213	151	105	90	127
Indianapolis-Carmel-Anderson, IN (MSA)	9	10	18	22	14	8	6	15	40	49	Chicago-Naperville-Elgin, IL-IN-WI (MSA)	165	112	83	96	85	76	40	43	63	75
Iowa City, IA (MSA)	101	76	95	92	54	27	36	36	54	38	Midland, TX (MSA)	166	138	141	153	114	155	140	108	66	98
Ithaca, NY (MSA)	188	181	216	220	183	193	138	159	125	109	Syracuse, NY (MSA)	167	133	173	146	152	152	145	185	102	78
Jackson, MI (MSA)	306	308	288	299	316	327	329	321	358	324	Champaign-Urbana, IL (MSA)	168	189	192	183	163	123	74	110	188	213
Jackson, MS (MSA)	227	264	254	250	208	176	146	125	108	92	Little Rock-North Little Rock-Conway, AR (MSA)	169	186	197	229	209	179	147	123	71	46
Jackson, TN (MSA)	211	210	239	264	272	234	247	288	292	155	Greenville-Anderson, SC (MSA)	170	180	185	175	190	196	163	167	172	217
Jacksonville, FL (MSA)	10	11	28	66	61	78	112	157	147	157	Norwich-New London, CT (MSA)	171	179	129	93	79	95	148	133	107	89
Jacksonville, NC (MSA)	209	239	301	270	265	218	167	194	149	114	Lakeland-Winter Haven, FL (MSA)	172	211	221	235	264	268	272	270	286	296
Janesville-Beloit, WI (MSA)	240	280	265	280	325	318	321	353	333	305	Eugene-Springfield, OR (MSA)	173	178	145	141	174	206	245	278	278	316
Jefferson City, MO (MSA)	203	227	252	294	286	271	229	204	205	182	Lebanon, PA (MSA)	174	184	189	152	160	161	178	147	197	195
Johnson City, TN (MSA)	156	188	236	275	300	293	307	338	307	267	Punta Gorda, FL (MSA)	175	172	206	228	266	301	287	333	340	362
Johnstown, PA (MSA)	383	383	380	368	371	375	373	354	343	338	Cleveland-Elyria, OH (MSA)	176	156	155	138	137	125	135	146	130	119
Jonesboro, AR (MSA)	272	248	280	291	310	283	246	283	252	292	Grants Pass, OR (MSA)	177	157	134	189	223	249	309	359	375	374
Joplin, MO (MSA)	327	338	336	282	306	300	281	220	258	244	Athens-Clarke County, GA (MSA)	178	171	199	203	180	184	171	234	251	263
Kahului-Wailuku-Lahaina, HI (MSA)	250	216	191	87	121	137	142	217	247	218	Spartanburg, SC (MSA)	179	145	165	173	179	192	196	255	221	253

384 Metropolitan Areas	2024	2023	2022	2021	2020	2019	2018	2017	2016	2015	384 Metropolitan Areas	2024	2023	2022	2021	2020	2019	2018	2017	2016	2015
Kalamazoo-Portage, MI (MSA)	79	93	109	91	122	168	222	285	230	278	Allentown-Bethlehem-Easton, PA-NJ (MSA)	180	163	132	116	95	86	72	65	70	30
Kankakee, IL (MSA)	370	343	337	334	365	361	352	320	354	348	Augusta-Richmond County, GA-SC (MSA)	181	151	152	167	153	147	158	187	193	170
Kansas City, MO-KS (MSA)	37	25	57	69	60	58	49	24	18	28	Modesto, CA (MSA)	182	144	89	100	106	110	96	148	183	221
Kennewick-Richland, WA (MSA)	64	66	61	48	68	62	82	80	59	37	Dubuque, IA (MSA)	183	198	233	246	249	250	235	235	190	158
Killeen-Temple, TX (MSA)	120	134	140	165	144	112	116	115	61	40	Deltona-Daytona Beach-Ormond Beach, FL (MSA)	184	213	212	212	253	284	296	347	337	355
Kingsport-Bristol, TN-VA (MSA)	302	297	324	351	343	344	337	331	335	337	Worcester, MA-CT (MSA)	185	121	116	128	116	114	123	106	129	90
Kingston, NY (MSA)	230	266	271	219	233	232	258	254	293	266	Columbus, IN (MSA)	186	177	170	160	157	178	160	155	192	236
Knoxville, TN (MSA)	16	12	26	64	33	46	73	129	113	94	Fairbanks, AK (MSA)	187	203	196	190	167	171	186	120	81	54
Kokomo, IN (MSA)	379	361	354	337	360	354	333	340	355	367	Ithaca, NY (MSA)	188	181	216	220	183	193	138	159	125	109
La Crosse-Onalaska, WI-MN (MSA)	149	124	139	150	151	153	125	121	177	138	Panama City, FL (MSA)	189	206	211	218	224	219	253	280	268	247
Lafayette, LA (MSA)	333	357	348	322	276	256	198	98	46	76	Lansing-East Lansing, MI (MSA)	190	218	226	227	242	236	248	290	306	326
Lafayette-West Lafayette, IN (MSA)	292	272	267	272	238	225	218	209	275	321	Walla Walla, WA (MSA)	191	215	222	271	311	325	290	261	281	323
Lake Charles, LA (MSA)	261	223	187	89	39	49	99	145	118	171	Memphis, TN-MS-AR (MSA)	192	102	156	179	136	138	136	144	139	108
Lake Havasu City-Kingman, AZ (MSA)	199	254	238	263	296	320	346	345	367	368	State College, PA (MSA)	193	149	175	180	161	128	111	92	53	29
Lakeland-Winter Haven, FL (MSA)	172	211	221	235	264	268	272	270	286	296	Lawrence, KS (MSA)	194	201	257	206	214	200	221	238	235	234
Lancaster, PA (MSA)	19	39	40	28	32	30	42	89	100	121	Tulsa, OK (MSA)	195	202	210	209	186	165	117	111	79	103
Lansing-East Lansing, MI (MSA)	190	218	226	227	242	236	248	290	306	326	Tucson, AZ (MSA)	196	207	160	197	231	246	276	226	280	274
Laredo, TX (MSA)	362	374	371	369	363	368	348	334	296	332	Odessa, TX (MSA)	197	205	176	159	123	146	156	100	57	126
Las Cruces, NM (MSA)	345	321	335	281	301	290	325	311	272	228	Rochester, NY (MSA)	198	166	213	188	194	195	150	119	60	69
Las Vegas-Henderson-Paradise, NV (MSA)	162	183	159	118	147	170	157	181	141	136	Lake Havasu City-Kingman, AZ (MSA)	199	254	238	263	296	320	346	345	367	368
Lawrence, KS (MSA)	194	201	257	206	214	200	221	238	235	234	Reading, PA (MSA)	200	224	182	145	155	158	155	140	158	139
Lawton, OK (MSA)	337	334	344	352	341	307	299	275	224	219	Santa Cruz-Watsonville, CA (MSA)	201	155	118	75	75	66	57	109	114	147
Lebanon, PA (MSA)	174	184	189	152	160	161	178	147	197	195	Tallahassee, FL (MSA)	202	174	231	239	254	274	263	229	271	270
Lewiston, ID-WA (MSA)	155	168	149	182	201	183	241	309	302	293	Jefferson City, MO (MSA)	203	227	252	294	286	271	229	204	205	182
Lewiston-Auburn, ME (MSA)	263	247	251	267	305	326	304	293	321	282	Casper, WY (MSA)	204	214	223	181	126	130	127	78	65	86
Lexington-Fayette, KY (MSA)	100	165	161	148	138	102	81	99	64	79	Grand Forks, ND-MN (MSA)	205	200	169	174	177	169	164	165	210	261
Lima, OH (MSA)	260	260	259	226	229	238	265	289	324	313	Manhattan, KS (MSA)	206	229	273	238	227	204	193	178	199	180
Lincoln, NE (MSA)	99	129	138	125	93	104	69	67	88	91	Alexandria, LA (MSA)	207	217	198	234	212	181	183	132	169	160
Little Rock-North Little Rock-Conway, AR (MSA)	169	186	197	229	209	179	147	123	71	46	Baton Rouge, LA (MSA)	208	197	168	136	73	53	63	30	26	18
Logan, UT-ID (MSA)	109	56	68	110	132	135	166	223	284	283	Jacksonville, NC (MSA)	209	239	301	270	265	218	167	194	149	114
Longview, TX (MSA)	353	370	367	335	291	264	201	173	121	159	Bloomington, IL (MSA)	210	199	205	210	222	209	169	152	135	93
Longview, WA (MSA)	119	173	202	217	241	240	268	304	228	272	Jackson, TN (MSA)	211	210	239	264	272	234	247	288	292	155
Los Angeles-Long Beach-Anaheim, CA (MSA)	142	106	53	33	27	32	59	71	84	105	Warner Robins, GA (MSA)	212	182	186	192	166	167	170	186	143	118
Louisville/Jefferson County, KY-IN (MSA)	89	107	74	76	104	109	80	84	134	124	Ocean City, NJ (MSA)	213	158	178	158	178	207	206	184	211	151
Lubbock, TX (MSA)	214	195	201	196	187	162	132	180	145	166	Lubbock, TX (MSA)	214	195	201	196	187	162	132	180	145	166
Lynchburg, VA (MSA)	335	330	334	346	329	302	323	310	276	251	Ocala, FL (MSA)	215	225	264	307	334	343	344	360	357	361
Macon-Bibb County, GA (MSA)	372	335	332	336	312	303	274	265	300	325	Salinas, CA (MSA)	216	196	147	59	64	72	98	142	162	185
Madera, CA (MSA)	218	208	167	222	213	217	225	224	266	311	Bloomsburg-Berwick, PA (MSA)	217	209	190	187	196	174	205	170	163	135
Madison, WI (MSA)	7	8	10	27	10	12	13	12	16	16	Madera, CA (MSA)	218	208	167	222	213	217	225	224	266	311
Manchester-Nashua, NH (MSA)	11	16	19	37	29	43	44	41	20	51	Sioux City, IA-NE-SD (MSA)	219	232	298	288	251	252	216	168	204	214
Manhattan, KS (MSA)	206	229	273	238	227	204	193	178	199	180	Greensboro-High Point, NC (MSA)	220	226	245	255	285	281	255	274	259	243

384 Metropolitan Areas	2024	2023	2022	2021	2020	2019	2018	2017	2016	2015	384 Metropolitan Areas	2024	2023	2022	2021	2020	2019	2018	2017	2016	2015
Mankato, MN (MSA)	246	268	269	256	284	269	283	279	317	346	Topeka, KS (MSA)	221	220	275	259	243	237	200	201	257	248
Mansfield, OH (MSA)	374	365	373	374	370	376	374	370	365	366	Mobile, AL (MSA)	222	236	266	304	313	306	349	307	255	269
McAllen-Edinburg-Mission, TX (MSA)	308	285	240	237	203	201	154	139	120	142	Redding, CA (MSA)	223	187	164	193	220	241	215	281	312	300
Medford, OR (MSA)	152	159	114	126	159	189	242	300	322	301	Bloomington, IN (MSA)	224	191	194	201	234	229	269	312	299	268
Memphis, TN-MS-AR (MSA)	192	102	156	179	136	138	136	144	139	108	Vineland-Bridgeton, NJ (MSA)	225	241	200	205	193	190	172	215	203	164
Merced, CA (MSA)	307	294	232	247	236	247	279	266	315	294	Morgantown, WV (MSA)	226	221	224	191	158	124	104	130	62	35
Miami-Fort Lauderdale-Pompano Beach, FL (MSA)	92	80	100	61	81	73	97	135	76	112	Jackson, MS (MSA)	227	264	254	250	208	176	146	125	108	92
Michigan City-La Porte, IN (MSA)	355	337	346	327	346	350	341	355	350	363	Fayetteville, NC (MSA)	228	256	250	252	252	243	220	171	133	85
Midland, MI (MSA)	294	292	330	315	332	323	350	284	327	319	Chambersburg-Waynesboro, PA (MSA)	229	242	217	214	202	194	227	183	214	275
Midland, TX (MSA)	166	138	141	153	114	155	140	108	66	98	Kingston, NY (MSA)	230	266	271	219	233	232	258	254	293	266
Milwaukee-Waukesha, WI (MSA)	90	117	112	115	96	89	71	50	93	82	Pueblo, CO (MSA)	231	222	180	225	255	267	306	350	330	297
Minneapolis-St. Paul-Bloomington, MN-WI (MSA)	57	70	37	34	34	35	28	46	37	60	Glens Falls, NY (MSA)	232	192	235	215	217	208	234	222	174	183
Missoula, MT (MSA)	51	29	88	84	83	75	144	188	226	199	Cleveland, TN (MSA)	233	286	313	349	323	314	264	196	165	203
Mobile, AL (MSA)	222	236	266	304	313	306	349	307	255	269	York-Hanover, PA (MSA)	234	235	218	221	230	221	259	256	217	209
Modesto, CA (MSA)	182	144	89	100	106	110	96	148	183	221	Evansville, IN-KY (MSA)	235	251	246	243	260	259	243	208	206	211
Monroe, LA (MSA)	360	369	345	363	350	331	295	262	173	184	Salisbury, MD-DE (MSA)	236	270	241	268	210	175	133	141	176	186
Monroe, MI (MSA)	299	326	307	283	270	270	260	294	250	290	Toledo, OH (MSA)	237	234	219	170	165	151	121	193	151	168
Montgomery, AL (MSA)	269	259	230	240	247	210	251	205	164	125	Carson City, NV (MSA)	238	261	296	287	262	279	298	273	260	233
Morgantown, WV (MSA)	226	221	224	191	158	124	104	130	62	35	Ames, IA (MSA)	239	212	268	261	248	230	212	219	198	177
Morristown, TN (MSA)	279	257	291	324	321	316	305	315	364	360	Janesville-Beloit, WI (MSA)	240	280	265	280	325	318	321	353	333	305
Mount Vernon-Anacortes, WA (MSA)	69	73	56	29	69	96	149	214	213	240	Elkhart-Goshen, IN (MSA)	241	193	183	194	205	197	224	282	326	306
Muncie, IN (MSA)	356	353	357	372	373	369	369	374	371	370	Winston-Salem, NC (MSA)	242	275	258	257	281	280	292	314	308	280
Muskegon, MI (MSA)	344	349	358	331	322	345	353	365	360	372	Dover, DE (MSA)	243	245	203	254	275	277	244	200	195	154
Myrtle Beach-Conway-North Myrtle Beach, SC-NC (MSA)	128	123	172	168	192	198	254	253	297	309	Flagstaff, AZ (MSA)	244	305	237	195	164	202	278	245	263	299
Napa, CA (MSA)	132	81	75	38	7	5	2	3	23	50	Chico, CA (MSA)	245	219	163	122	143	157	174	211	236	279
Naples-Marco Island, FL (MSA)	31	48	73	105	102	134	108	93	154	197	Mankato, MN (MSA)	246	268	269	256	284	269	283	279	317	346
Nashville-Davidson--Murfreesboro--Franklin, TN (MSA)	3	1	4	4	1	1	4	10	10	7	Sherman-Denison, TX (MSA)	247	233	248	290	327	322	311	243	219	222
New Bern, NC (MSA)	268	288	317	300	338	334	310	291	289	249	Burlington, NC (MSA)	248	253	247	310	356	358	354	364	376	375
New Haven-Milford, CT (MSA)	102	115	99	114	117	98	94	51	85	70	Waterloo-Cedar Falls, IA (MSA)	249	249	285	285	250	228	217	218	212	206
New Orleans-Metairie, LA (MSA)	328	301	243	266	216	224	177	117	119	122	Kahului-Wailuku-Lahaina, HI (MSA)	250	216	191	87	121	137	142	217	247	218
New York-Newark-Jersey City, NY-NJ-PA (MSA)	84	50	51	39	52	70	39	77	27	42	Florence-Muscle Shoals, AL (MSA)	251	276	320	345	342	329	339	318	273	259
Niles, MI (MSA)	284	315	323	313	320	338	351	346	351	359	Grand Junction, CO (MSA)	252	269	279	297	294	310	285	325	295	318
North Port-Sarasota-Bradenton, FL (MSA)	59	83	97	120	148	173	210	236	234	260	Racine, WI (MSA)	253	258	263	265	271	294	270	267	323	315
Norwich-New London, CT (MSA)	171	179	129	93	79	95	148	133	107	89	Dothan, AL (MSA)	254	243	274	303	347	342	340	317	285	255
Ocala, FL (MSA)	215	225	264	307	334	343	344	360	357	361	Hagerstown-Martinsburg, MD-WV (MSA)	255	244	229	232	195	172	179	175	159	115
Ocean City, NJ (MSA)	213	158	178	158	178	207	206	184	211	151	Homosassa Springs, FL (MSA)	256	267	322	317	344	347	347	367	352	352
Odessa, TX (MSA)	197	205	176	159	123	146	156	100	57	126	Davenport-Moline-Rock Island, IA-IL (MSA)	257	230	214	202	207	177	209	156	137	111
Ogden-Clearfield, UT (MSA)	67	84	64	82	82	92	113	114	106	129	Watertown-Fort Drum, NY (MSA)	258	231	253	253	226	214	189	164	103	65
Oklahoma City, OK (MSA)	126	160	153	155	129	101	68	26	30	68	Harrisonburg, VA (MSA)	259	252	249	248	269	255	226	197	202	193

384 Metropolitan Areas	2024	2023	2022	2021	2020	2019	2018	2017	2016	2015	384 Metropolitan Areas	2024	2023	2022	2021	2020	2019	2018	2017	2016	2015
Olympia-Lacey-Tumwater, WA (MSA)	13	9	11	15	28	24	37	68	87	81	Lima, OH (MSA)	260	260	259	226	229	238	265	289	324	313
Omaha-Council Bluffs, NE-IA (MSA)	50	59	77	104	88	81	47	58	12	5	Lake Charles, LA (MSA)	261	223	187	89	39	49	99	145	118	171
Orlando-Kissimmee-Sanford, FL (MSA)	63	64	72	41	71	68	102	96	123	141	Hickory-Lenoir-Morganton, NC (MSA)	262	291	303	328	354	366	364	373	380	377
Oshkosh-Neenah, WI (MSA)	116	114	130	113	107	83	76	128	105	102	Lewiston-Auburn, ME (MSA)	263	247	251	267	305	326	304	293	321	282
Owensboro, KY (MSA)	358	373	368	371	349	337	331	277	256	264	Bangor, ME (MSA)	264	281	282	289	288	297	291	298	262	245
Oxnard-Thousand Oaks-Ventura, CA (MSA)	85	69	69	50	50	42	41	64	94	57	South Bend-Mishawaka, IN-MI (MSA)	265	255	227	208	244	231	207	251	305	307
Palm Bay-Melbourne-Titusville, FL (MSA)	55	67	101	131	175	199	252	297	313	286	Albuquerque, NM (MSA)	266	289	234	245	283	288	316	249	200	144
Panama City, FL (MSA)	189	206	211	218	224	219	253	280	268	247	Albany-Lebanon, OR (MSA)	267	298	225	200	228	253	284	330	363	371
Parkersburg-Vienna, WV (MSA)	359	364	363	379	377	378	377	349	356	327	New Bern, NC (MSA)	268	288	317	300	338	334	310	291	289	249
Pensacola-Ferry Pass-Brent, FL (MSA)	104	113	158	156	197	226	261	225	277	252	Montgomery, AL (MSA)	269	259	230	240	247	210	251	205	164	125
Peoria, IL (MSA)	286	274	283	260	256	254	237	230	225	181	El Paso, TX (MSA)	270	279	242	242	232	244	219	174	132	110
Philadelphia-Camden-Wilmington, PA-NJ-DE-MD (MSA)	122	101	82	70	51	55	25	28	22	25	Dalton, GA (MSA)	271	314	316	311	277	263	277	341	316	345
Phoenix-Mesa-Chandler, AZ (MSA)	12	37	13	31	53	64	78	85	80	77	Jonesboro, AR (MSA)	272	248	280	291	310	283	246	283	252	292
Pine Bluff, AR (MSA)	380	377	381	384	382	381	382	361	372	354	Grand Island, NE (MSA)	273	278	300	279	246	262	228	276	237	225
Pittsburgh, PA (MSA)	112	135	127	71	87	82	62	34	36	24	Bowling Green, KY (MSA)	274	310	256	230	263	180	213	163	182	230
Pittsfield, MA (MSA)	313	302	276	249	237	245	236	269	216	215	Hattiesburg, MS (MSA)	275	299	314	295	240	211	175	198	254	226
Pocatello, ID (MSA)	278	295	306	342	303	295	326	351	373	379	Scranton--Wilkes-Barre, PA (MSA)	276	284	255	241	221	216	195	127	144	134
Port St. Lucie, FL (MSA)	94	142	174	171	211	258	267	308	319	331	Virginia Beach-Norfolk-Newport News, VA-NC (MSA)	277	237	215	204	169	160	124	104	83	39
Portland-South Portland, ME (MSA)	39	28	35	42	43	47	67	90	124	106	Pocatello, ID (MSA)	278	295	306	342	303	295	326	351	373	379
Portland-Vancouver-Hillsboro, OR-WA (MSA)	36	26	6	11	6	11	53	66	38	41	Morristown, TN (MSA)	279	257	291	324	321	316	305	315	364	360
Poughkeepsie-Newburgh-Middletown, NY (MSA)	95	105	105	74	97	na	na	na	na	na	Utica-Rome, NY (MSA)	280	240	270	269	304	305	313	296	208	169
Prescott Valley-Prescott, AZ (MSA)	163	204	162	176	184	220	288	302	359	369	Abilene, TX (MSA)	281	304	295	325	314	308	257	199	242	271
Providence-Warwick, RI-MA (MSA)	153	126	126	135	139	145	109	55	86	52	Springfield, MA (MSA)	282	228	209	169	154	141	139	116	117	113
Provo-Orem, UT (MSA)	23	27	38	24	42	41	48	113	101	152	Atlantic City-Hammonton, NJ (MSA)	283	283	272	236	239	272	286	257	218	204
Pueblo, CO (MSA)	231	222	180	225	255	267	306	350	330	297	Niles, MI (MSA)	284	315	323	313	320	338	351	346	351	359
Punta Gorda, FL (MSA)	175	172	206	228	266	301	287	333	340	362	Yakima, WA (MSA)	285	265	143	151	181	187	233	286	261	254
Racine, WI (MSA)	253	258	263	265	271	294	270	267	323	315	Peoria, IL (MSA)	286	274	283	260	256	254	237	230	225	181
Raleigh-Cary, NC (MSA)	4	5	14	7	11	9	9	42	21	14	San Angelo, TX (MSA)	287	263	315	343	308	330	273	203	238	295
Rapid City, SD (MSA)	68	60	111	162	142	132	118	131	152	137	Brunswick, GA (MSA)	288	324	349	326	315	339	363	368	361	349
Reading, PA (MSA)	200	224	182	145	155	158	155	140	158	139	Cape Girardeau, MO-IL (MSA)	289	287	284	277	257	275	240	248	240	210
Redding, CA (MSA)	223	187	164	193	220	241	215	281	312	300	Tuscaloosa, AL (MSA)	290	246	244	258	273	239	190	126	138	165
Reno, NV (MSA)	137	141	179	106	149	139	197	242	245	223	Gettysburg, PA (MSA)	291	282	261	244	261	242	239	259	244	298
Richmond, VA (MSA)	135	97	80	102	56	44	30	22	56	47	Lafayette-West Lafayette, IN (MSA)	292	272	267	272	238	225	218	209	275	321
Riverside-San Bernardino-Ontario, CA (MSA)	115	77	54	58	62	69	153	169	148	176	Elizabethtown-Fort Knox, KY (MSA)	293	293	289	284	278	291	332	343	304	242
Roanoke, VA (MSA)	323	307	299	308	274	276	230	177	194	175	Midland, MI (MSA)	294	292	330	315	332	323	350	284	327	319
Rochester, MN (MSA)	129	110	106	124	130	149	119	143	184	212	Decatur, AL (MSA)	295	250	294	357	375	371	366	362	341	351

384 Metropolitan Areas	2024	2023	2022	2021	2020	2019	2018	2017	2016	2015	384 Metropolitan Areas	2024	2023	2022	2021	2020	2019	2018	2017	2016	2015
Rochester, NY (MSA)	198	166	213	188	194	195	150	119	60	69	Gulfport-Biloxi, MS (MSA)	296	306	319	350	351	349	360	352	288	239
Rockford, IL (MSA)	349	351	342	318	290	319	330	322	270	287	Florence, SC (MSA)	297	296	286	293	331	336	327	332	314	302
Rocky Mount, NC (MSA)	365	380	383	380	383	382	381	381	381	378	Wichita, KS (MSA)	298	238	260	251	245	233	204	158	167	174
Rome, GA (MSA)	341	344	338	323	287	286	271	324	368	373	Monroe, MI (MSA)	299	326	307	283	270	260	294	250	290	
Sacramento-Roseville-Folsom, CA (MSA)	46	33	16	13	16	15	45	72	67	64	Staunton, VA (MSA)	300	303	305	320	318	312	302	287	318	328
Saginaw, MI (MSA)	322	331	350	339	345	351	359	335	353	353	Altoona, PA (MSA)	301	300	262	213	215	223	214	206	243	207
Salem, OR (MSA)	82	86	58	86	119	154	208	268	220	250	Kingsport-Bristol, TN-VA (MSA)	302	297	324	351	343	344	337	331	335	337
Salinas, CA (MSA)	216	196	147	59	64	72	98	142	162	185	Yuma, AZ (MSA)	303	309	228	231	259	285	319	348	342	341
Salisbury, MD-DE (MSA)	236	270	241	268	210	175	133	141	176	186	Springfield, IL (MSA)	304	262	281	276	267	257	173	189	215	202
Salt Lake City, UT (MSA)	1	7	3	5	5	6	8	29	3	9	Duluth, MN-WI (MSA)	305	319	341	338	330	333	320	272	246	285
San Angelo, TX (MSA)	287	263	315	343	308	330	273	203	238	295	Jackson, MI (MSA)	306	308	288	299	316	327	329	321	358	324
San Antonio-New Braunfels, TX (MSA)	125	118	86	43	37	33	12	17	8	6	Merced, CA (MSA)	307	294	232	247	236	247	279	266	315	294
San Diego-Chula Vista-Carlsbad, CA (MSA)	41	23	12	18	8	7	14	5	13	27	McAllen-Edinburg-Mission, TX (MSA)	308	285	240	237	203	201	154	139	120	142
San Francisco-Oakland-Berkeley, CA (MSA)	49	52	55	32	35	19	19	2	28	36	Visalia, CA (MSA)	309	336	277	286	282	278	335	342	294	329
San Jose-Sunnyvale-Santa Clara, CA (MSA)	34	6	5	3	4	4	5	7	25	58	Wichita Falls, TX (MSA)	310	379	379	377	367	359	336	329	331	340
San Luis Obispo-Paso Robles, CA (MSA)	66	18	21	14	13	14	17	19	47	63	St. Joseph, MO-KS (MSA)	311	273	309	309	333	332	334	319	233	189
Santa Cruz-Watsonville, CA (MSA)	201	155	118	75	75	66	57	109	114	147	Brownsville-Harlingen, TX (MSA)	312	317	318	321	337	304	266	244	265	241
Santa Fe, NM (MSA)	330	313	293	296	317	289	315	263	282	284	Pittsfield, MA (MSA)	313	302	276	249	237	245	236	269	216	215
Santa Maria-Santa Barbara, CA (MSA)	77	47	52	36	45	40	61	53	97	87	Binghamton, NY (MSA)	314	271	304	278	293	298	289	252	231	224
Santa Rosa-Petaluma, CA (MSA)	76	41	29	21	19	26	18	49	89	130	Blacksburg-Christiansburg, VA (MSA)	315	290	302	262	235	265	249	240	239	208
Savannah, GA (MSA)	78	89	113	97	63	80	103	102	122	123	Canton-Massillon, OH (MSA)	316	318	331	314	324	315	314	299	301	322
Scranton--Wilkes-Barre, PA (MSA)	276	284	255	241	221	216	195	127	144	134	Decatur, IL (MSA)	317	322	328	302	298	287	293	250	279	288
Seattle-Tacoma-Bellevue, WA (MSA)	27	20	1	1	2	2	3	13	1	2	Sebring-Avon Park, FL (MSA)	318	345	353	356	374	373	378	375	379	380
Sebastian-Vero Beach, FL (MSA)	105	161	208	216	225	248	256	264	303	347	Battle Creek, MI (MSA)	319	332	325	312	307	292	317	344	311	303
Sebring-Avon Park, FL (MSA)	318	345	353	356	374	373	378	375	379	380	Elmira, NY (MSA)	320	277	326	316	336	341	312	306	248	281
Sheboygan, WI (MSA)	159	146	123	88	125	106	134	192	191	191	Goldsboro, NC (MSA)	321	341	343	362	378	379	355	363	349	330
Sherman-Denison, TX (MSA)	247	233	248	290	327	322	311	243	219	222	Saginaw, MI (MSA)	322	331	350	339	345	351	359	335	353	353
Shreveport-Bossier City, LA (MSA)	338	358	340	348	302	324	280	210	160	163	Roanoke, VA (MSA)	323	307	299	308	274	276	230	177	194	175
Sierra Vista-Douglas, AZ (MSA)	339	347	290	333	319	340	357	327	344	312	Charleston, WV (MSA)	324	325	327	319	289	299	294	221	196	162
Sioux City, IA-NE-SD (MSA)	219	232	298	288	251	252	216	168	204	214	East Stroudsburg, PA (MSA)	325	320	311	273	279	273	301	316	338	335
Sioux Falls, SD (MSA)	6	3	8	10	9	17	26	32	24	8	Corpus Christi, TX (MSA)	326	339	292	224	189	140	88	76	49	59
South Bend-Mishawaka, IN-MI (MSA)	265	255	227	208	244	231	207	251	305	307	Joplin, MO (MSA)	327	338	336	282	306	300	281	220	258	244
Spartanburg, SC (MSA)	179	145	165	173	179	192	196	255	221	253	New Orleans-Metairie, LA (MSA)	328	301	243	266	216	224	177	117	119	122
Spokane-Spokane Valley, WA (MSA)	58	55	62	67	115	126	161	182	170	187	Hot Springs, AR (MSA)	329	312	287	305	299	317	322	292	325	276
Springfield, IL (MSA)	304	262	281	276	267	257	173	189	215	202	Santa Fe, NM (MSA)	330	313	293	296	317	289	315	263	282	284
Springfield, MA (MSA)	282	228	209	169	154	141	139	116	117	113	Hanford-Corcoran, CA (MSA)	331	328	278	292	297	282	318	313	320	304
Springfield, MO (MSA)	107	140	150	185	185	205	192	241	209	220	Huntington-Ashland, WV-KY-OH (MSA)	332	340	351	340	335	321	300	228	232	201
Springfield, OH (MSA)	368	355	364	355	362	363	371	366	369	357	Lafayette, LA (MSA)	333	357	348	322	276	256	198	98	46	76
St. Cloud, MN (MSA)	148	169	193	207	206	222	250	232	201	257	Hinesville, GA (MSA)	334	329	310	360	352	346	343	357	332	310

384 Metropolitan Areas	2024	2023	2022	2021	2020	2019	2018	2017	2016	2015	384 Metropolitan Areas	2024	2023	2022	2021	2020	2019	2018	2017	2016	2015
St. George, UT (MSA)	88	82	96	119	150	186	232	231	253	308	Lynchburg, VA (MSA)	335	330	334	346	329	302	323	310	276	251
St. Joseph, MO-KS (MSA)	311	273	309	309	333	332	334	319	233	189	El Centro, CA (MSA)	336	342	321	298	309	311	338	328	329	336
St. Louis, MO-IL (MSA)	106	104	110	142	103	113	101	45	104	73	Lawton, OK (MSA)	337	334	344	352	341	307	299	275	224	219
State College, PA (MSA)	193	149	175	180	161	128	111	92	53	29	Shreveport-Bossier City, LA (MSA)	338	358	340	348	302	324	280	210	160	163
Staunton, VA (MSA)	300	303	305	320	318	312	302	287	318	328	Sierra Vista-Douglas, AZ (MSA)	339	347	290	333	319	340	357	327	344	312
Stockton, CA (MSA)	93	63	50	55	76	74	106	154	186	216	Hammond, LA (MSA)	340	348	339	332	348	348	365	305	241	273
Sumter, SC (MSA)	350	311	312	330	353	353	328	295	309	277	Rome, GA (MSA)	341	344	338	323	287	286	271	324	368	373
Syracuse, NY (MSA)	167	133	173	146	152	152	145	185	102	78	Columbus, GA-AL (MSA)	342	316	329	364	355	328	303	227	189	150
Tallahassee, FL (MSA)	202	174	231	239	254	274	263	229	271	270	Beaumont-Port Arthur, TX (MSA)	343	327	308	274	280	313	275	213	180	190
Tampa-St. Petersburg-Clearwater, FL (MSA)	25	46	63	54	90	90	93	112	115	132	Muskegon, MI (MSA)	344	349	358	331	322	345	353	365	360	372
Terre Haute, IN (MSA)	352	333	347	366	364	364	368	356	347	344	Las Cruces, NM (MSA)	345	321	335	281	301	290	325	311	272	228
Texarkana, TX-AR (MSA)	366	366	369	361	359	357	342	326	291	232	Houma-Thibodaux, LA (MSA)	346	354	333	306	268	251	187	95	52	96
The Villages, FL (MSA)	26	72	135	147	176	182	223	216	166	198	Bay City, MI (MSA)	347	352	370	376	376	374	375	376	366	365
Toledo, OH (MSA)	237	234	219	170	165	151	121	193	151	168	Fort Smith, AR-OK (MSA)	348	350	359	370	366	367	372	372	346	358
Topeka, KS (MSA)	221	220	275	259	243	237	200	201	257	248	Rockford, IL (MSA)	349	351	342	318	290	319	330	322	270	287
Trenton-Princeton, NJ (MSA)	86	109	94	111	133	103	70	87	77	55	Sumter, SC (MSA)	350	311	312	330	353	353	328	295	309	277
Tucson, AZ (MSA)	196	207	160	197	231	246	276	226	280	274	Valdosta, GA (MSA)	351	323	297	341	328	296	324	339	287	333
Tulsa, OK (MSA)	195	202	210	209	186	165	117	111	79	103	Terre Haute, IN (MSA)	352	333	347	366	364	364	368	356	347	344
Tuscaloosa, AL (MSA)	290	246	244	258	273	239	190	126	138	165	Longview, TX (MSA)	353	370	367	335	291	264	201	173	121	159
Twin Falls, ID (MSA)	133	176	148	199	219	212	231	na	na	na	Victoria, TX (MSA)	354	360	355	344	292	261	199	137	98	140
Tyler, TX (MSA)	140	190	154	164	145	129	83	70	131	167	Michigan City-La Porte, IN (MSA)	355	337	346	327	346	350	341	355	350	363
Utica-Rome, NY (MSA)	280	240	270	269	304	305	313	296	208	169	Muncie, IN (MSA)	356	353	357	372	373	369	369	374	371	370
Valdosta, GA (MSA)	351	323	297	341	328	296	324	339	287	333	Flint, MI (MSA)	357	367	356	329	340	356	361	369	377	376
Vallejo, CA (MSA)	108	57	24	19	17	21	27	39	73	97	Owensboro, KY (MSA)	358	373	368	371	349	337	331	277	256	264
Victoria, TX (MSA)	354	360	355	344	292	261	199	137	98	140	Parkersburg-Vienna, WV (MSA)	359	364	363	379	377	378	377	349	356	327
Vineland-Bridgeton, NJ (MSA)	225	241	200	205	193	190	172	215	203	164	Monroe, LA (MSA)	360	369	345	363	350	331	295	262	173	184
Virginia Beach-Norfolk-Newport News, VA-NC (MSA)	277	237	215	204	169	160	124	104	83	39	Youngstown-Warren-Boardman, OH-PA (MSA)	361	363	372	365	358	360	362	358	339	342
Visalia, CA (MSA)	309	336	277	286	282	278	335	342	294	329	Laredo, TX (MSA)	362	374	371	369	363	368	348	334	296	332
Waco, TX (MSA)	139	125	115	140	118	131	110	122	179	153	Anniston-Oxford, AL (MSA)	363	346	365	378	380	372	379	379	374	364
Walla Walla, WA (MSA)	191	215	222	271	311	325	290	261	281	323	Enid, OK (MSA)	364	368	362	347	295	266	184	166	na	na
Warner Robins, GA (MSA)	212	182	186	192	166	167	170	186	143	118	Rocky Mount, NC (MSA)	365	380	383	380	383	382	381	381	381	378
Washington-Arlington-Alexandria, DC-VA-MD-WV (MSA)	80	42	36	57	18	16	20	18	9	1	Texarkana, TX-AR (MSA)	366	366	369	361	359	357	342	326	291	232
Waterloo-Cedar Falls, IA (MSA)	249	249	285	285	250	228	217	218	212	206	Williamsport, PA (MSA)	367	375	375	373	369	352	308	246	267	258
Watertown-Fort Drum, NY (MSA)	258	231	253	253	226	214	189	164	103	65	Springfield, OH (MSA)	368	355	364	355	362	363	371	366	369	357
Wausau-Weston, WI (MSA)	136	147	133	161	171	159	162	124	142	145	Carbondale-Marion, IL (MSA)	369	359	352	354	339	309	282	303	223	200
Weirton-Steubenville, WV-OH (MSA)	382	378	378	381	379	380	380	380	370	356	Kankakee, IL (MSA)	370	343	337	334	365	361	352	320	354	348
Wenatchee, WA (MSA)	113	164	102	121	134	163	191	202	264	314	Erie, PA (MSA)	371	372	366	353	357	355	345	323	334	339
Wheeling, WV-OH (MSA)	375	362	374	301	258	260	297	239	168	192	Macon-Bibb County, GA (MSA)	372	335	332	336	312	303	274	265	300	325
Wichita Falls, TX (MSA)	310	379	379	377	367	359	336	329	331	340	Albany, GA (MSA)	373	356	361	367	372	370	370	377	348	350
Wichita, KS (MSA)	298	238	260	251	245	233	204	158	167	174	Mansfield, OH (MSA)	374	365	373	374	370	376	374	370	365	366
Williamsport, PA (MSA)	367	375	375	373	369	352	308	246	267	258	Wheeling, WV-OH (MSA)	375	362	374	301	258	260	297	239	168	192
Wilmington, NC (MSA)	42	71	121	154	168	156	168	190	136	101	Gadsden, AL (MSA)	376	371	376	375	368	365	367	371	362	343
Winchester, VA-WV (MSA)	87	75	47	103	86	97	107	101	109	99	Danville, IL (MSA)	377	381	382	382	381	377	376	378	378	381
Winston-Salem, NC (MSA)	242	275	258	257	281	280	292	314	308	280	Cumberland, MD-WV (MSA)	378	376	360	358	361	362	356	337	290	237
Worcester, MA-CT (MSA)	185	121	116	128	116	114	123	106	129	90	Kokomo, IN (MSA)	379	361	354	337	360	354	333	340	355	367
Yakima, WA (MSA)	285	265	143	151	181	187	233	286	261	254	Pine Bluff, AR (MSA)	380	377	381	384	382	381	382	361	372	354
York-Hanover, PA (MSA)	234	235	218	221	230	221	259	256	217	209	Farmington, NM (MSA)	381	382	377	359	326	335	358	336	328	320

384 Metropolitan Areas	2024	2023	2022	2021	2020	2019	2018	2017	2016	2015	384 Metropolitan Areas	2024	2023	2022	2021	2020	2019	2018	2017	2016	2015
Youngstown-Warren-Boardman, OH-PA (MSA)	361	363	372	365	358	360	362	358	339	342	Weirton-Steubenville, WV-OH (MSA)	382	378	378	381	379	380	380	380	370	356
Yuba City, CA (MSA)	157	148	85	98	99	121	181	237	274	246	Johnstown, PA (MSA)	383	383	380	368	371	375	373	354	343	338
Yuma, AZ (MSA)	303	309	228	231	259	285	319	348	342	341	Beckley, WV (MSA)	384	384	384	383	384	383	383	382	345	291





543 Micropolitan Areas	2024	2023	2022	2021	2020	2019	2018	2017	2016	2015	543 Micropolitan Areas	2024	2023	2022	2021	2020	2019	2018	2017	2016	2015
Aberdeen, SD (McrSA)	87	77	100	98	53	75	36	18	48	39	Bozeman, MT (McrSA)	1	1	1	1	1	1	1	7	15	20
Aberdeen, WA (McrSA)	131	165	133	131	195	218	337	369	409	426	Heber, UT (McrSA)	2	2	2	2	3	34	65	157	239	313
Ada, OK (McrSA)	147	101	104	137	120	145	211	183	199	275	Kalispell, MT (McrSA)	3	6	9	21	10	14	69	102	100	151
Adrian, MI (McrSA)	425	439	443	437	395	453	460	480	469	455	Lebanon, NH-VT (McrSA)	4	3	3	20	12	19	11	3	10	28
Alamogordo, NM (McrSA)	282	284	295	311	353	329	325	313	263	188	Helena, MT (McrSA)	5	30	26	40	24	49	54	38	8	14
Albemarle, NC (McrSA)	161	191	168	169	220	275	334	433	454	441	Jackson, WY-ID (McrSA)	6	4	13	5	33	12	63	71	20	38
Albert Lea, MN (McrSA)	166	174	147	173	224	282	319	256	258	323	Concord, NH (McrSA)	7	11	16	32	51	63	61	55	4	25
Albertville, AL (McrSA)	132	207	282	301	345	403	438	481	394	377	Fremont, NE (McrSA)	8	33	35	77	94	116	78	134	143	57
Alexander City, AL (McrSA)	421	422	420	461	432	392	453	499	na	na	Ellensburg, WA (McrSA)	9	10	11	6	23	10	34	88	49	41
Alexandria, MN (McrSA)	80	109	81	90	111	115	114	203	240	309	Pinehurst-Southern Pines, NC (McrSA)	10	21	39	53	43	44	27	103	149	121
Alice, TX (McrSA)	519	518	506	511	468	449	315	192	140	215	Augusta-Waterville, ME (McrSA)	11	9	6	17	19	27	48	41	56	54
Alma, MI (McrSA)	238	309	269	318	384	438	467	495	428	419	Traverse City, MI (McrSA)	12	15	17	38	20	28	4	17	42	103
Alpena, MI (McrSA)	308	377	363	348	367	366	432	474	413	417	Barre, VT (McrSA)	13	16	7	15	14	17	14	8	13	35
Altus, OK (McrSA)	273	239	224	296	317	301	320	299	225	294	Lewisburg, PA (McrSA)	14	12	12	13	4	3	2	10	40	21
Americus, GA (McrSA)	520	502	487	509	507	512	528	518	496	501	Cookeville, TN (McrSA)	15	13	20	57	32	39	31	83	102	122
Amsterdam, NY (McrSA)	285	233	177	164	152	123	144	195	176	147	Shelbyville, TN (McrSA)	16	57	83	107	83	43	33	67	82	93
Andrews, TX (McrSA)	108	94	66	47	35	46	6	12	14	22	Wooster, OH (McrSA)	17	7	14	14	7	5	5	34	84	110
Angola, IN (McrSA)	234	221	278	290	350	397	312	388	429	440	Torrington, CT (McrSA)	18	36	50	34	86	88	47	11	33	47
Arcadia, FL (McrSA)	309	373	393	374	431	467	502	504	518	532	Edwards, CO (McrSA)	19	14	19	7	31	7	8	28	69	108
Ardmore, OK (McrSA)	330	316	243	300	212	181	134	66	38	100	Laconia, NH (McrSA)	20	5	10	18	13	13	13	6	45	43
Arkadelphia, AR (McrSA)	466	476	375	378	398	442	430	468	470	435	Washington, IN (McrSA)	21	49	24	31	45	42	86	121	193	196
Ashland, OH (McrSA)	184	147	153	146	139	164	176	249	312	331	Tullahoma-Manchester, TN (McrSA)	22	39	29	56	37	51	64	86	66	86
Ashtabula, OH (McrSA)	337	314	329	297	351	365	400	408	456	442	Whitewater, WI (McrSA)	23	24	22	26	25	31	30	54	98	141
Astoria, OR (McrSA)	75	40	25	12	9	38	94	155	181	171	Key West, FL (McrSA)	24	28	40	25	29	56	17	43	103	155
Atchison, KS (McrSA)	481	453	492	433	470	493	524	529	521	531	Hailey, ID (McrSA)	25	32	77	144	69	85	117	139	222	170
Athens, OH (McrSA)	305	223	231	175	184	149	127	156	206	114	Stevens Point, WI (McrSA)	26	25	15	23	22	24	38	44	111	76
Athens, TN (McrSA)	151	111	95	95	131	186	244	320	315	327	Oak Harbor, WA (McrSA)	27	23	23	11	15	15	90	172	268	283
Athens, TX (McrSA)	374	389	397	407	357	345	239	233	234	320	Holland, MI (McrSA)	28	54	49	60	58	68	126	126	194	261
Atmore, AL (McrSA)	354	350	392	368	372	342	356	400	na	na	Breckenridge, CO (McrSA)	29	18	4	4	6	6	72	179	265	338
Auburn, IN (McrSA)	89	107	45	68	119	152	99	196	288	367	Keene, NH (McrSA)	30	8	28	22	48	50	32	29	28	59
Auburn, NY (McrSA)	127	118	126	149	200	197	148	104	80	87	Mitchell, SD (McrSA)	31	34	57	76	63	62	55	33	73	13
Augusta-Waterville, ME (McrSA)	11	9	6	17	19	27	48	41	56	54	Glenwood Springs, CO (McrSA)	32	35	36	58	73	53	80	106	81	84
Austin, MN (McrSA)	323	308	293	285	294	263	178	213	190	247	Hood River, OR (McrSA)	33	19	5	8	5	4	39	133	214	260
Bainbridge, GA (McrSA)	503	508	530	529	529	537	533	547	494	464	Brookings, SD (McrSA)	34	44	60	41	16	16	18	15	77	70
Baraboo, WI (McrSA)	62	47	107	27	34	33	15	13	62	56	Kill Devil Hills, NC (McrSA)	35	43	87	61	109	143	169	264	349	324
Bardstown, KY (McrSA)	99	130	131	141	153	150	193	194	155	130	Port Angeles, WA (McrSA)	36	26	33	29	74	106	164	231	212	166
Barre, VT (McrSA)	13	16	7	15	14	17	14	8	13	35	Centralia, WA (McrSA)	37	46	42	111	170	222	280	276	277	332
Bartlesville, OK (McrSA)	204	285	280	244	213	183	153	64	18	60	Jefferson, GA (McrSA)	38	68	96	72	91	87	181	221	151	231
Batavia, NY (McrSA)	92	58	116	67	79	64	60	53	46	44	Spearfish, SD (McrSA)	39	17	74	75	72	83	140	230	296	239
Batesville, AR (McrSA)	230	255	311	337	303	239	271	348	329	274	Beaver Dam, WI (McrSA)	40	37	68	97	121	90	76	19	37	32
Bay City, TX (McrSA)	347	310	403	330	293	227	194	242	306	352	Morehead City, NC (McrSA)	41	62	141	118	145	125	208	294	332	282
Beatrice, NE (McrSA)	365	427	472	455	427	463	468	438	387	350	Truckee-Grass Valley, CA (McrSA)	42	38	27	19	11	11	3	48	133	131
Beaver Dam, WI (McrSA)	40	37	68	97	121	90	76	19	37	32	Juneau, AK (McrSA)	43	29	47	37	36	48	45	42	22	7
Bedford, IN (McrSA)	420	354	314	366	414	439	474	475	502	512	Hermiston-Pendleton, OR (McrSA)	44	66	21	43	44	58	35	47	68	62
Beeville, TX (McrSA)	523	522	504	522	493	502	417	302	219	288	Effingham, IL (McrSA)	45	22	38	65	71	107	165	99	36	73
Bellefontaine, OH (McrSA)	191	187	152	151	129	171	98	111	115	208	Jamestown, ND (McrSA)	46	90	70	160	127	95	50	108	108	109
Bemidji, MN (McrSA)	114	125	89	122	124	131	185	283	336	328	Boone, NC (McrSA)	47	53	128	96	146	147	223	305	285	194

543 Micropolitan Areas	2024	2023	2022	2021	2020	2019	2018	2017	2016	2015	543 Micropolitan Areas	2024	2023	2022	2021	2020	2019	2018	2017	2016	2015
Bennettsville, SC (McrSA)	487	448	424	405	442	455	498	503	484	418	Norfolk, NE (McrSA)	48	61	125	183	128	118	151	140	179	119
Bennington, VT (McrSA)	142	133	123	63	96	113	143	175	218	209	Pullman, WA (McrSA)	49	20	8	16	21	22	106	92	124	102
Berlin, NH (McrSA)	314	265	259	323	332	350	399	383	385	292	Los Alamos, NM (McrSA)	50	55	37	70	123	165	102	204	236	159
Big Rapids, MI (McrSA)	381	327	300	271	219	261	311	409	377	412	Oxford, MS (McrSA)	51	63	31	28	8	9	49	36	17	17
Big Spring, TX (McrSA)	290	248	178	110	110	162	159	122	117	226	Laramie, WY (McrSA)	52	59	138	150	98	84	44	60	129	74
Big Stone Gap, VA (McrSA)	511	498	494	495	488	498	511	395	304	189	Elko, NV (McrSA)	53	78	51	86	39	72	43	51	26	11
Blackfoot, ID (McrSA)	189	254	246	342	356	359	442	454	388	357	Durango, CO (McrSA)	54	85	72	82	64	47	7	16	7	42
Bluefield, WV-VA (McrSA)	469	479	475	468	420	452	377	301	208	144	Paris, TN (McrSA)	55	69	122	66	59	54	149	252	316	249
Bluffton, IN (McrSA)	268	278	317	396	na	na	na	na	na	na	Vineyard Haven, MA (McrSA)	56	27	44	3	2	26	29	14	23	18
Blytheville, AR (McrSA)	505	485	485	488	524	533	483	484	407	456	Fallon, NV (McrSA)	57	41	32	109	157	221	263	338	235	212
Bogalusa, LA (McrSA)	513	514	518	512	496	491	463	422	414	467	Shelton, WA (McrSA)	58	75	46	54	113	153	222	304	298	254
Bonham, TX (McrSA)	366	334	235	192	240	280	297	324	na	na	Seymour, IN (McrSA)	59	76	56	83	97	73	21	79	93	175
Boone, NC (McrSA)	47	53	128	96	146	147	223	305	285	194	Crossville, TN (McrSA)	60	112	173	210	186	195	186	244	238	280
Borger, TX (McrSA)	335	263	320	278	201	138	196	193	147	193	Yankton, SD (McrSA)	61	50	53	73	47	70	146	250	348	278
Bozeman, MT (McrSA)	1	1	1	1	1	1	1	7	15	20	Baraboo, WI (McrSA)	62	47	107	27	34	33	15	13	62	56
Bradford, PA (McrSA)	456	426	430	383	323	332	351	330	323	303	Sevierville, TN (McrSA)	63	31	34	44	40	35	68	176	261	165
Brainerd, MN (McrSA)	180	93	84	105	115	127	97	185	262	334	Celina, OH (McrSA)	64	45	67	51	18	29	52	35	53	107
Branson, MO (McrSA)	333	370	411	235	244	250	308	345	361	403	Williston, ND (McrSA)	65	42	55	48	42	69	41	2	2	2
Breckenridge, CO (McrSA)	29	18	4	4	6	6	72	179	265	338	Gardnerville Ranchos, NV (McrSA)	66	91	94	81	77	117	201	298	372	341
Brenham, TX (McrSA)	237	313	289	328	292	228	152	65	57	48	Pella, IA (McrSA)	67	48	93	104	116	101	147	251	na	na
Brevard, NC (McrSA)	247	353	381	409	447	474	490	509	506	525	Columbus, NE (McrSA)	68	95	113	140	81	79	125	81	97	65
Brookhaven, MS (McrSA)	260	242	260	306	347	340	324	259	186	217	Watertown, SD (McrSA)	69	72	140	202	169	212	209	163	221	140
Brookings, OR (McrSA)	277	253	256	302	354	382	403	430	485	472	Fredericksburg, TX (McrSA)	70	82	135	120	100	57	19	50	86	104
Brookings, SD (McrSA)	34	44	60	41	16	16	18	15	77	70	Kerrville, TX (McrSA)	71	114	154	153	162	177	109	84	71	81
Brownsville, TN (McrSA)	486	467	477	469	515	503	525	526	na	na	Watertown-Fort Atkinson, WI (McrSA)	72	52	79	116	93	121	74	75	152	153
Brownwood, TX (McrSA)	356	369	382	334	301	265	237	238	299	259	Gloversville, NY (McrSA)	73	60	64	55	88	133	182	248	250	184
Bucyrus-Galion, OH (McrSA)	459	442	436	453	478	487	471	494	483	496	Spencer, IA (McrSA)	74	83	162	177	130	191	198	105	168	145
Burley, ID (McrSA)	157	153	108	132	144	102	119	161	256	346	Astoria, OR (McrSA)	75	40	25	12	9	38	94	155	181	171
Burlington, IA-IL (McrSA)	361	343	401	349	275	213	175	191	270	207	Faribault-Northfield, MN (McrSA)	76	87	52	74	105	142	123	197	158	181
Butte-Silver Bow, MT (McrSA)	167	160	139	148	106	104	129	100	44	8	Seneca, SC (McrSA)	77	84	137	123	117	122	174	272	275	349
Cadillac, MI (McrSA)	328	387	387	351	393	408	485	508	497	517	Red Wing, MN (McrSA)	78	131	91	42	65	91	70	58	138	129
Calhoun, GA (McrSA)	249	292	309	307	250	216	281	271	334	383	Lewistown, PA (McrSA)	79	121	99	80	90	76	120	110	76	97
Cambridge, MD (McrSA)	318	286	248	312	271	229	265	295	354	272	Alexandria, MN (McrSA)	80	109	81	90	111	115	114	203	240	309
Cambridge, OH (McrSA)	427	346	337	239	182	103	77	39	120	183	Kearney, NE (McrSA)	81	113	114	142	103	105	92	56	142	148
Camden, AR (McrSA)	310	300	369	416	405	461	480	460	381	355	Winnemucca, NV (McrSA)	82	141	186	143	85	134	217	138	52	4
Campbellsville, KY (McrSA)	499	473	429	483	461	401	472	489	478	487	Coos Bay, OR (McrSA)	83	65	30	35	55	78	191	267	326	362
Cañon City, CO (McrSA)	263	178	184	136	159	206	203	274	360	325	Port Lavaca, TX (McrSA)	84	129	130	119	185	235	156	61	51	113
Carlsbad-Artesia, NM (McrSA)	112	96	54	33	49	52	23	4	16	40	Menomonie, WI (McrSA)	85	105	82	135	140	174	187	170	109	94
Carroll, IA (McrSA)	256	256	250	167	228	198	216	247	na	na	Dodge City, KS (McrSA)	86	70	65	62	89	132	136	160	113	27
Cedar City, UT (McrSA)	148	119	146	189	248	311	410	416	362	439	Aberdeen, SD (McrSA)	87	77	100	98	53	75	36	18	48	39
Cedartown, GA (McrSA)	386	430	451	419	422	423	409	386	457	471	Red Bluff, CA (McrSA)	88	67	18	10	27	36	59	127	148	187
Celina, OH (McrSA)	64	45	67	51	18	29	52	35	53	107	Auburn, IN (McrSA)	89	107	45	68	119	152	99	196	288	367
Central City, KY (McrSA)	526	524	522	466	460	409	482	424	na	na	Rock Springs, WY (McrSA)	90	124	155	87	70	59	67	20	31	24
Centralia, IL (McrSA)	498	504	509	476	462	484	492	453	431	386	Easton, MD (McrSA)	91	115	106	84	60	45	24	46	58	50
Centralia, WA (McrSA)	37	46	42	111	170	222	280	276	277	332	Batavia, NY (McrSA)	92	58	116	67	79	64	60	53	46	44
Charleston-Mattoon, IL (McrSA)	239	168	134	275	337	339	405	394	465	448	Decatur, IN (McrSA)	93	80	71	93	156	201	264	337	426	495
Chillicothe, OH (McrSA)	165	161	189	154	178	224	161	243	322	321	Madison, IN (McrSA)	94	92	69	126	134	155	132	173	259	267
Clarksburg, WV (McrSA)	173	186	129	128	62	86	82	31	19	9	Minot, ND (McrSA)	95	97	120	145	50	77	25	5	3	6

543 Micropolitan Areas	2024	2023	2022	2021	2020	2019	2018	2017	2016	2015	543 Micropolitan Areas	2024	2023	2022	2021	2020	2019	2018	2017	2016	2015
Clarksdale, MS (McrSA)	542	543	542	541	541	547	547	543	533	463	Pahrump, NV (McrSA)	96	163	204	171	233	294	358	426	342	317
Clearlake, CA (McrSA)	278	179	73	89	92	135	200	279	340	339	Cullman, AL (McrSA)	97	144	214	190	122	82	116	229	224	291
Cleveland, MS (McrSA)	504	516	528	527	516	523	489	449	463	408	Prineville, OR (McrSA)	98	172	142	249	324	337	359	397	373	414
Clewiston, FL (McrSA)	433	461	464	485	501	526	519	530	522	507	Bardstown, KY (McrSA)	99	130	131	141	153	150	193	194	155	130
Clinton, IA (McrSA)	325	271	308	273	320	276	272	296	217	172	Moses Lake, WA (McrSA)	100	159	58	101	126	92	96	120	130	161
Clovis, NM (McrSA)	370	384	291	262	192	112	162	96	30	31	Steamboat Springs, CO (McrSA)	101	134	143	181	181	215	207	119	54	78
Coffeyville, KS (McrSA)	435	429	488	446	454	462	440	367	297	255	Durant, OK (McrSA)	102	56	111	127	107	93	124	212	170	197
Coldwater, MI (McrSA)	322	234	290	373	369	419	478	497	499	509	Fernley, NV (McrSA)	103	175	210	293	341	381	447	382	302	279
Columbus, MS (McrSA)	130	154	170	138	99	108	56	40	39	10	The Dalles, OR (McrSA)	104	79	41	45	30	21	46	63	92	99
Columbus, NE (McrSA)	68	95	113	140	81	79	125	81	97	65	Sandpoint, ID (McrSA)	105	123	151	220	246	297	374	446	410	406
Concord, NH (McrSA)	7	11	16	32	51	63	61	55	4	25	Sheridan, WY (McrSA)	106	89	59	102	78	61	26	23	24	49
Connersville, IN (McrSA)	529	521	473	508	527	531	529	512	527	519	Plattsburgh, NY (McrSA)	107	88	98	64	26	40	37	25	55	36
Cookeville, TN (McrSA)	15	13	20	57	32	39	31	83	102	122	Andrews, TX (McrSA)	108	94	66	47	35	46	6	12	14	22
Coos Bay, OR (McrSA)	83	65	30	35	55	78	191	267	326	362	Dickinson, ND (McrSA)	109	71	161	176	52	30	10	1	1	1
Cordele, GA (McrSA)	495	501	523	503	521	524	530	538	524	523	Dyersburg, TN (McrSA)	110	81	165	174	197	184	234	188	233	222
Corinth, MS (McrSA)	307	368	388	352	335	361	378	413	371	335	Montrose, CO (McrSA)	111	102	63	121	164	232	291	368	365	299
Cornelia, GA (McrSA)	404	446	406	413	408	421	418	478	461	473	Carlsbad-Artesia, NM (McrSA)	112	96	54	33	49	52	23	4	16	40
Corning, NY (McrSA)	261	235	299	218	270	290	316	236	169	167	Ottawa, KS (McrSA)	113	51	62	78	196	151	202	286	359	370
Corsicana, TX (McrSA)	360	375	365	360	419	422	352	226	226	235	Bemidji, MN (McrSA)	114	125	89	122	124	131	185	283	336	328
Cortland, NY (McrSA)	258	227	332	258	262	247	189	91	119	198	Warrensburg, MO (McrSA)	115	98	102	165	199	260	323	258	175	179
Coshocton, OH (McrSA)	422	458	511	490	481	481	437	354	408	420	Warsaw, IN (McrSA)	116	137	145	157	165	156	141	59	106	139
Craig, CO (McrSA)	383	299	219	276	274	241	278	323	253	158	Tupelo, MS (McrSA)	117	103	97	108	102	110	53	62	79	71
Crawfordsville, IN (McrSA)	295	344	343	346	377	347	268	349	424	452	Wilmington, OH (McrSA)	118	120	160	114	118	148	195	290	276	265
Crescent City, CA (McrSA)	218	148	127	139	190	223	288	350	420	366	Rolla, MO (McrSA)	119	110	101	115	137	137	130	189	174	106
Crossville, TN (McrSA)	60	112	173	210	186	195	186	244	238	280	Moberly, MO (McrSA)	120	200	183	166	207	193	233	184	101	132
Cullman, AL (McrSA)	97	144	214	190	122	82	116	229	224	291	Platteville, WI (McrSA)	121	73	76	106	167	154	154	152	135	164
Cullowhee, NC (McrSA)	245	283	274	319	336	360	338	407	444	416	Garden City, KS (McrSA)	122	184	192	188	168	207	224	228	232	186
Danville, KY (McrSA)	319	336	355	412	411	427	376	380	452	446	Salina, KS (McrSA)	123	127	86	46	56	32	91	118	126	67
Danville, VA (McrSA)	490	489	419	467	446	430	390	462	464	388	Gillette, WY (McrSA)	124	142	227	203	141	140	93	26	11	34
Dayton, TN (McrSA)	145	194	263	320	306	327	396	434	441	443	Zanesville, OH (McrSA)	125	136	149	182	177	173	131	199	257	276
Decatur, IN (McrSA)	93	80	71	93	156	201	264	337	426	495	Oneonta, NY (McrSA)	126	64	85	49	75	74	111	141	141	89
Defiance, OH (McrSA)	227	241	185	184	245	258	199	269	191	232	Auburn, NY (McrSA)	127	118	126	149	200	197	148	104	80	87
Del Rio, TX (McrSA)	418	454	273	201	198	188	71	68	85	90	Enterprise, AL (McrSA)	128	150	213	254	221	246	310	220	177	134
Deming, NM (McrSA)	467	500	455	462	519	529	459	360	272	182	Lewisburg, TN (McrSA)	129	158	217	236	263	210	300	398	405	486
DeRidder, LA (McrSA)	409	459	459	450	433	444	408	327	242	318	Columbus, MS (McrSA)	130	154	170	138	99	108	56	40	39	10
Dickinson, ND (McrSA)	109	71	161	176	52	30	10	1	1	1	Aberdeen, WA (McrSA)	131	165	133	131	195	218	337	369	409	426
Dixon, IL (McrSA)	385	307	340	359	331	304	369	346	292	262	Albertville, AL (McrSA)	132	207	282	301	345	403	438	481	394	377
Dodge City, KS (McrSA)	86	70	65	62	89	132	136	160	113	27	Sidney, OH (McrSA)	133	100	43	24	28	18	12	27	67	95
Douglas, GA (McrSA)	382	435	427	418	463	480	461	493	491	505	Mount Vernon, OH (McrSA)	134	74	61	59	57	60	51	57	61	80
Dublin, GA (McrSA)	379	318	302	331	364	377	386	482	443	427	Pierre, SD (McrSA)	135	86	150	117	67	98	57	114	91	91
DuBois, PA (McrSA)	358	290	276	230	277	330	289	240	195	199	Sulphur Springs, TX (McrSA)	136	231	283	355	374	308	225	145	88	115
Dumas, TX (McrSA)	257	229	244	225	180	170	160	73	60	52	Wapakoneta, OH (McrSA)	137	99	117	69	61	80	101	150	215	293
Duncan, OK (McrSA)	464	470	454	402	348	334	350	165	116	205	Mountain Home, ID (McrSA)	138	164	179	238	299	287	253	328	330	306
Durango, CO (McrSA)	54	85	72	82	64	47	7	16	7	42	Sanford, NC (McrSA)	139	169	174	198	208	248	243	331	307	218
Durant, OK (McrSA)	102	56	111	127	107	93	124	212	170	197	Georgetown, SC (McrSA)	140	167	190	197	254	285	362	288	183	229
Dyersburg, TN (McrSA)	110	81	165	174	197	184	234	188	233	222	Quincy, IL-MO (McrSA)	141	116	88	85	68	55	62	107	189	126
Eagle Pass, TX (McrSA)	462	401	335	267	214	249	213	149	209	238	Bennington, VT (McrSA)	142	133	123	63	96	113	143	175	218	209
Easton, MD (McrSA)	91	115	106	84	60	45	24	46	58	50	Wisconsin Rapids-Marshfield, WI (McrSA)	143	139	103	100	108	124	183	222	162	77
Edwards, CO (McrSA)	19	14	19	7	31	7	8	28	69	108	Jasper, IN (McrSA)	144	143	78	94	95	67	20	21	27	69
Effingham, IL (McrSA)	45	22	38	65	71	107	165	99	36	73	Dayton, TN (McrSA)	145	194	263	320	306	327	396	434	441	443

543 Micropolitan Areas	2024	2023	2022	2021	2020	2019	2018	2017	2016	2015	543 Micropolitan Areas	2024	2023	2022	2021	2020	2019	2018	2017	2016	2015
El Campo, TX (McrSA)	460	406	368	308	365	380	301	205	171	243	Moscow, ID (McrSA)	146	104	157	205	188	169	184	278	358	434
El Dorado, AR (McrSA)	431	386	413	432	385	354	274	215	201	160	Ada, OK (McrSA)	147	101	104	137	120	145	211	183	199	275
Elizabeth City, NC (McrSA)	156	196	261	283	305	358	380	373	341	266	Cedar City, UT (McrSA)	148	119	146	189	248	311	410	416	362	439
Elk City, OK (McrSA)	390	326	321	250	191	182	87	30	6	12	Eureka-Arcata, CA (McrSA)	149	126	48	36	41	8	83	144	159	162
Elkins, WV (McrSA)	394	433	380	329	361	369	332	318	283	191	Roseburg, OR (McrSA)	150	117	75	103	147	194	260	329	370	390
Elko, NV (McrSA)	53	78	51	86	39	72	43	51	26	11	Athens, TN (McrSA)	151	111	95	95	131	186	244	320	315	327
Ellensburg, WA (McrSA)	9	10	11	6	23	10	34	88	49	41	Mount Pleasant, TX (McrSA)	152	203	284	361	308	396	304	234	247	178
Emporia, KS (McrSA)	413	388	438	354	390	416	425	457	477	465	Norwalk, OH (McrSA)	153	106	109	99	114	136	95	162	243	269
Enterprise, AL (McrSA)	128	150	213	254	221	246	310	220	177	134	Newport, OR (McrSA)	154	108	110	50	101	159	230	306	380	368
Escanaba, MI (McrSA)	321	251	238	216	247	313	366	401	379	333	New Philadelphia-Dover, OH (McrSA)	155	128	158	91	66	20	22	49	132	204
Española, NM (McrSA)	532	538	521	526	534	545	546	548	534	530	Elizabeth City, NC (McrSA)	156	196	261	283	305	358	380	373	341	266
Eufaula, AL-GA (McrSA)	527	530	532	542	532	541	534	532	na	na	Burley, ID (McrSA)	157	153	108	132	144	102	119	161	256	346
Eureka-Arcata, CA (McrSA)	149	126	48	36	41	8	83	144	159	162	Fergus Falls, MN (McrSA)	158	157	121	134	151	200	250	239	309	364
Evanston, WY (McrSA)	362	355	366	353	362	372	330	297	254	213	North Platte, NE (McrSA)	159	180	212	289	204	157	121	70	110	75
Fairfield, IA (McrSA)	445	376	415	389	441	391	355	425	453	502	Wilson, NC (McrSA)	160	188	144	129	142	175	177	182	107	92
Fairmont, MN (McrSA)	443	411	423	414	466	443	428	459	na	na	Albemarle, NC (McrSA)	161	191	168	169	220	275	334	433	454	441
Fairmont, WV (McrSA)	339	362	322	315	281	310	219	129	59	3	Rexburg, ID (McrSA)	162	138	176	246	307	315	282	351	391	423
Fallon, NV (McrSA)	57	41	32	109	157	221	263	338	235	212	Marietta, OH (McrSA)	163	135	175	161	154	176	110	95	128	224
Faribault-Northfield, MN (McrSA)	76	87	52	74	105	142	123	197	158	181	Mason City, IA (McrSA)	164	189	233	207	193	146	105	76	160	79
Farmington, MO (McrSA)	350	351	359	333	285	320	341	364	363	314	Chillicothe, OH (McrSA)	165	161	189	154	178	224	161	243	322	321
Fergus Falls, MN (McrSA)	158	157	121	134	151	200	250	239	309	364	Albert Lea, MN (McrSA)	166	174	147	173	224	282	319	256	258	323
Fernley, NV (McrSA)	103	175	210	293	341	381	447	382	302	279	Butte-Silver Bow, MT (McrSA)	167	160	139	148	106	104	129	100	44	8
Findlay, OH (McrSA)	179	151	182	112	54	23	28	24	29	15	Hastings, NE (McrSA)	168	170	208	243	217	259	247	263	269	174
Fitzgerald, GA (McrSA)	525	535	538	539	538	550	541	551	536	535	Muscatine, IA (McrSA)	169	192	132	168	160	114	108	93	21	63
Forest City, NC (McrSA)	455	481	467	492	523	540	535	540	526	524	Troy, AL (McrSA)	170	201	264	326	296	242	326	265	192	233
Forrest City, AR (McrSA)	541	533	531	532	535	538	532	544	515	480	McPherson, KS (McrSA)	171	152	236	159	176	126	128	37	83	142
Fort Dodge, IA (McrSA)	215	205	247	232	203	130	89	125	197	138	Paducah, KY-IL (McrSA)	172	209	196	130	76	41	79	32	32	19
Fort Leonard Wood, MO (McrSA)	283	218	255	294	288	346	327	219	125	37	Clarksburg, WV (McrSA)	173	186	129	128	62	86	82	31	19	9
Fort Madison-Keokuk, IA-IL-MO (McrSA)	372	356	447	460	417	353	306	336	366	429	Granbury, TX (McrSA)	174	213	218	208	155	na	na	na	na	na
Fort Morgan, CO (McrSA)	304	261	201	162	189	243	299	232	157	127	Klamath Falls, OR (McrSA)	175	162	119	178	239	303	363	410	393	379
Fort Payne, AL (McrSA)	470	464	516	523	513	528	526	533	na	na	Manitowoc, WI (McrSA)	176	182	187	200	172	128	73	85	121	123
Fort Polk South, LA (McrSA)	293	306	288	298	267	273	258	158	78	33	Pottsville, PA (McrSA)	177	183	171	147	138	161	158	143	127	120
Frankfort, IN (McrSA)	373	398	394	439	458	483	454	463	427	438	Stephenville, TX (McrSA)	178	122	118	155	166	211	285	310	321	371
Frankfort, KY (McrSA)	222	222	195	252	187	139	85	117	167	98	Findlay, OH (McrSA)	179	151	182	112	54	23	28	24	29	15
Fredericksburg, TX (McrSA)	70	82	135	120	100	57	19	50	86	104	Brainerd, MN (McrSA)	180	93	84	105	115	127	97	185	262	334
Freeport, IL (McrSA)	334	303	344	394	382	370	416	420	432	402	Hudson, NY (McrSA)	181	210	232	193	175	120	58	74	123	133
Fremont, NE (McrSA)	8	33	35	77	94	116	78	134	143	57	Ozark, AL (McrSA)	182	149	163	191	174	167	179	181	137	72
Fremont, OH (McrSA)	228	224	191	199	161	144	81	78	112	96	Lake City, FL (McrSA)	183	208	245	265	253	190	150	241	294	300
Gaffney, SC (McrSA)	479	403	434	403	373	402	469	456	455	424	Ashland, OH (McrSA)	184	147	153	146	139	164	176	249	312	331
Gainesville, TX (McrSA)	317	321	304	227	206	264	206	113	96	185	Paragould, AR (McrSA)	185	190	229	221	209	217	166	216	308	380
Galesburg, IL (McrSA)	509	510	512	501	480	448	357	355	412	397	Thomasville, GA (McrSA)	186	171	209	223	249	314	296	261	188	128
Gallup, NM (McrSA)	533	532	507	474	499	517	512	517	508	445	Kendallville, IN (McrSA)	187	226	159	156	183	204	269	292	355	432
Garden City, KS (McrSA)	122	184	192	188	168	207	224	228	232	186	Hannibal, MO (McrSA)	188	145	203	281	260	237	298	342	317	225
Gardnerville Ranchos, NV (McrSA)	66	91	94	81	77	117	201	298	372	341	Blackfoot, ID (McrSA)	189	254	246	342	356	359	442	454	388	357
Georgetown, SC (McrSA)	140	167	190	197	254	285	362	288	183	229	Hutchinson, MN (McrSA)	190	220	169	158	149	160	215	200	279	311
Gillette, WY (McrSA)	124	142	227	203	141	140	93	26	11	34	Bellefontaine, OH (McrSA)	191	187	152	151	129	171	98	111	115	208
Glasgow, KY (McrSA)	512	496	470	493	465	492	462	450	501	522	Hutchinson, KS (McrSA)	192	219	268	264	302	289	270	266	237	210

543 Micropolitan Areas	2024	2023	2022	2021	2020	2019	2018	2017	2016	2015	543 Micropolitan Areas	2024	2023	2022	2021	2020	2019	2018	2017	2016	2015
Glenwood Springs, CO (McrSA)	32	35	36	58	73	53	80	106	81	84	Spirit Lake, IA (McrSA)	193	173	221	231	251	178	100	112	198	257
Gloversville, NY (McrSA)	73	60	64	55	88	133	182	248	250	184	Paris, TX (McrSA)	194	176	172	124	112	71	104	101	47	68
Granbury, TX (McrSA)	174	213	218	208	155	na	na	na	na	na	Sedalia, MO (McrSA)	195	211	230	228	280	291	277	235	266	302
Grand Rapids, MN (McrSA)	345	324	306	268	316	384	293	190	na	na	Huntsville, TX (McrSA)	196	244	240	280	256	262	220	214	146	116
Grants, NM (McrSA)	514	520	417	475	487	446	477	496	482	447	Scottsbluff, NE (McrSA)	197	249	226	291	210	189	112	131	50	55
Great Bend, KS (McrSA)	407	445	449	423	380	383	348	293	252	322	Rutland, VT (McrSA)	198	206	148	92	135	163	197	218	223	192
Greeneville, TN (McrSA)	400	438	390	422	421	404	347	372	415	484	Sonora, CA (McrSA)	199	146	90	39	84	119	171	254	331	307
Greensburg, IN (McrSA)	220	156	92	71	104	141	142	210	286	358	Seneca Falls, NY (McrSA)	200	185	252	196	237	240	214	273	213	220
Greenville, MS (McrSA)	521	511	517	514	522	515	514	507	511	515	Willmar, MN (McrSA)	201	199	115	88	82	66	84	80	114	135
Greenville, OH (McrSA)	235	193	242	259	226	288	318	312	260	286	Jasper, AL (McrSA)	202	216	234	217	231	na	na	na	na	na
Greenwood, MS (McrSA)	480	440	461	506	517	522	523	490	402	359	Ukiah, CA (McrSA)	203	166	124	52	87	94	88	153	241	244
Greenwood, SC (McrSA)	244	237	275	261	272	253	302	363	369	298	Bartlesville, OK (McrSA)	204	285	280	244	213	183	153	64	18	60
Grenada, MS (McrSA)	432	434	358	390	434	473	456	483	487	510	LaGrange, GA-AL (McrSA)	205	247	197	187	125	96	107	90	63	51
Guymon, OK (McrSA)	359	268	351	380	313	307	218	124	200	241	Ketchikan, AK (McrSA)	206	181	112	30	38	37	16	22	43	46
Hailey, ID (McrSA)	25	32	77	144	69	85	117	139	222	170	Kapaa, HI (McrSA)	207	132	80	9	17	25	9	52	131	169
Hannibal, MO (McrSA)	188	145	203	281	260	237	298	342	317	225	Pontiac, IL (McrSA)	208	267	270	272	259	270	262	207	280	211
Harrison, AR (McrSA)	403	382	386	451	379	395	388	429	350	285	Iron Mountain, MI-WI (McrSA)	209	155	136	133	80	99	139	148	184	206
Hastings, NE (McrSA)	168	170	208	243	217	259	247	263	269	174	Ontario, OR-ID (McrSA)	210	230	164	219	282	321	373	374	446	409
Hays, KS (McrSA)	216	266	395	369	304	271	229	142	161	177	Malone, NY (McrSA)	211	197	281	255	264	268	212	262	203	136
Heber, UT (McrSA)	2	2	2	2	3	34	65	157	239	313	Statesboro, GA (McrSA)	212	202	257	263	230	245	267	347	324	351
Helena, MT (McrSA)	5	30	26	40	24	49	54	38	8	14	Ogdensburg-Massena, NY (McrSA)	213	140	188	179	211	236	192	180	104	88
Helena-West Helena, AR (McrSA)	543	542	543	543	542	551	550	545	532	529	Shelby, NC (McrSA)	214	298	222	247	309	351	411	466	467	453
Henderson, NC (McrSA)	506	523	524	519	510	510	481	510	488	478	Fort Dodge, IA (McrSA)	215	205	247	232	203	130	89	125	197	138
Hereford, TX (McrSA)	380	413	331	391	402	434	419	341	300	344	Hays, KS (McrSA)	216	266	395	369	304	271	229	142	161	177
Hermiston-Pendleton, OR (McrSA)	44	66	21	43	44	58	35	47	68	62	Storm Lake, IA (McrSA)	217	240	202	215	205	230	204	109	89	149
Hillsdale, MI (McrSA)	411	456	450	404	403	435	436	476	474	492	Crescent City, CA (McrSA)	218	148	127	139	190	223	288	350	420	366
Hilo, HI (McrSA)	269	177	105	79	46	109	115	171	172	168	New Ulm, MN (McrSA)	219	257	241	242	298	266	275	245	310	326
Hobbs, NM (McrSA)	236	273	216	152	133	158	205	77	34	101	Greensburg, IN (McrSA)	220	156	92	71	104	141	142	210	286	358
Holland, MI (McrSA)	28	54	49	60	58	68	126	126	194	261	Union City, TN (McrSA)	221	329	383	382	444	501	496	505	458	450
Hood River, OR (McrSA)	33	19	5	8	5	4	39	133	214	260	Frankfort, KY (McrSA)	222	222	195	252	187	139	85	117	167	98
Hope, AR (McrSA)	530	531	533	537	531	543	537	534	na	na	Ottumwa, IA (McrSA)	223	215	199	245	194	166	133	168	230	223
Houghton, MI (McrSA)	313	280	364	347	319	367	389	418	399	387	Wahpeton, ND-MN (McrSA)	224	212	200	251	173	208	210	225	303	315
Hudson, NY (McrSA)	181	210	232	193	175	120	58	74	123	133	St. Marys, GA (McrSA)	225	214	211	125	148	220	286	201	187	230
Huntingdon, PA (McrSA)	320	302	287	233	257	312	295	287	328	337	Talladega-Sylacauga, AL (McrSA)	226	243	205	253	268	283	259	322	284	361
Huntington, IN (McrSA)	389	393	400	430	453	457	441	445	433	491	Defiance, OH (McrSA)	227	241	185	184	245	258	199	269	191	232
Huntsville, TX (McrSA)	196	244	240	280	256	262	220	214	146	116	Fremont, OH (McrSA)	228	224	191	199	161	144	81	78	112	96
Huron, SD (McrSA)	255	228	239	286	242	202	261	268	290	240	Nacogdoches, TX (McrSA)	229	287	347	343	287	298	249	209	165	150
Hutchinson, KS (McrSA)	192	219	268	264	302	289	270	266	237	210	Batesville, AR (McrSA)	230	255	311	337	303	239	271	348	329	274
Hutchinson, MN (McrSA)	190	220	169	158	149	160	215	200	279	311	Richmond-Berea, KY (McrSA)	231	315	249	224	215	196	168	166	154	111
Indiana, PA (McrSA)	254	225	180	163	218	172	180	87	25	5	Liberal, KS (McrSA)	232	296	345	376	327	328	375	260	182	154
Indianola, MS (McrSA)	539	536	541	540	540	549	545	546	535	520	Winona, MN (McrSA)	233	272	228	241	289	362	343	379	357	353
Iron Mountain, MI-WI (McrSA)	209	155	136	133	80	99	139	148	184	206	Angola, IN (McrSA)	234	221	278	290	350	397	312	388	429	440
Jackson, OH (McrSA)	414	383	296	372	370	357	333	387	339	310	Greenville, OH (McrSA)	235	193	242	259	226	288	318	312	260	286
Jackson, WY-ID (McrSA)	6	4	13	5	33	12	63	71	20	38	Hobbs, NM (McrSA)	236	273	216	152	133	158	205	77	34	101
Jacksonville, IL (McrSA)	434	348	398	442	381	412	395	362	416	391	Brenham, TX (McrSA)	237	313	289	328	292	228	152	65	57	48
Jacksonville, TX (McrSA)	492	497	480	473	472	477	413	384	337	398	Alma, MI (McrSA)	238	309	269	318	384	438	467	495	428	419
Jamestown, ND (McrSA)	46	90	70	160	127	95	50	108	108	109	Charleston-Mattoon, IL (McrSA)	239	168	134	275	337	339	405	394	465	448

543 Micropolitan Areas	2024	2023	2022	2021	2020	2019	2018	2017	2016	2015	543 Micropolitan Areas	2024	2023	2022	2021	2020	2019	2018	2017	2016	2015
Jamestown-Dunkirk-Fredonia, NY (McrSA)	346	288	326	277	258	277	266	314	346	312	McMinnville, TN (McrSA)	240	274	307	358	416	428	393	472	430	454
Jasper, AL (McrSA)	202	216	234	217	231	na	na	na	na	na	Starkville, MS (McrSA)	241	259	272	279	202	185	137	154	229	216
Jasper, IN (McrSA)	144	143	78	94	95	67	20	21	27	69	Kinston, NC (McrSA)	242	323	323	316	359	375	404	448	434	372
Jefferson, GA (McrSA)	38	68	96	72	91	87	181	221	151	231	Lock Haven, PA (McrSA)	243	252	206	113	132	111	135	116	90	64
Jennings, LA (McrSA)	482	487	483	472	464	445	434	378	na	na	Greenwood, SC (McrSA)	244	237	275	261	272	253	302	363	369	298
Jesup, GA (McrSA)	368	364	379	384	415	456	443	432	398	329	Cullowhee, NC (McrSA)	245	283	274	319	336	360	338	407	444	416
Juneau, AK (McrSA)	43	29	47	37	36	48	45	42	22	7	Mount Airy, NC (McrSA)	246	301	286	284	252	302	342	411	479	477
Kalispell, MT (McrSA)	3	6	9	21	10	14	69	102	100	151	Brevard, NC (McrSA)	247	353	381	409	447	474	490	509	506	525
Kapaa, HI (McrSA)	207	132	80	9	17	25	9	52	131	169	Marshall, MN (McrSA)	248	338	262	269	295	267	309	270	207	152
Kearney, NE (McrSA)	81	113	114	142	103	105	92	56	142	148	Calhoun, GA (McrSA)	249	292	309	307	250	216	281	271	334	383
Keene, NH (McrSA)	30	8	28	22	48	50	32	29	28	59	Stillwater, OK (McrSA)	250	232	327	303	232	203	145	72	12	53
Kendallville, IN (McrSA)	187	226	159	156	183	204	269	292	355	432	Nogales, AZ (McrSA)	251	385	303	213	136	187	226	169	210	245
Kennett, MO (McrSA)	537	534	539	535	539	548	540	536	507	511	Tifton, GA (McrSA)	252	281	338	287	343	319	246	186	228	264
Kerrville, TX (McrSA)	71	114	154	153	162	177	109	84	71	81	Searcy, AR (McrSA)	253	297	356	406	437	415	415	376	295	219
Ketchikan, AK (McrSA)	206	181	112	30	38	37	16	22	43	46	Indiana, PA (McrSA)	254	225	180	163	218	172	180	87	25	5
Key West, FL (McrSA)	24	28	40	25	29	56	17	43	103	155	Huron, SD (McrSA)	255	228	239	286	242	202	261	268	290	240
Kill Devil Hills, NC (McrSA)	35	43	87	61	109	143	169	264	349	324	Carroll, IA (McrSA)	256	256	250	167	228	198	216	247	na	na
Kingsville, TX (McrSA)	497	475	412	438	388	348	252	147	163	190	Dumas, TX (McrSA)	257	229	244	225	180	170	160	73	60	52
Kinston, NC (McrSA)	242	323	323	316	359	375	404	448	434	372	Cortland, NY (McrSA)	258	227	332	258	262	247	189	91	119	198
Kirksville, MO (McrSA)	392	396	432	479	450	471	487	500	436	369	Vicksburg, MS (McrSA)	259	277	298	344	387	436	435	415	325	253
Klamath Falls, OR (McrSA)	175	162	119	178	239	303	363	410	393	379	Brookhaven, MS (McrSA)	260	242	260	306	347	340	324	259	186	217
Laconia, NH (McrSA)	20	5	10	18	13	13	13	6	45	43	Corning, NY (McrSA)	261	235	299	218	270	290	316	236	169	167
LaGrande, OR (McrSA)	398	340	325	305	269	326	335	377	445	389	Van Wert, OH (McrSA)	262	198	225	260	330	374	360	359	382	394
LaGrange, GA-AL (McrSA)	205	247	197	187	125	96	107	90	63	51	Cañon City, CO (McrSA)	263	178	184	136	159	206	203	274	360	325
Lake City, FL (McrSA)	183	208	245	265	253	190	150	241	294	300	Washington, NC (McrSA)	264	305	348	401	425	411	406	403	450	437
Lamesa, TX (McrSA)	508	517	508	500	484	460	426	375	347	404	Martin, TN (McrSA)	265	332	167	226	291	349	422	427	449	457
Laramie, WY (McrSA)	52	59	138	150	98	84	44	60	129	74	Marquette, MI (McrSA)	266	204	297	209	225	233	276	319	211	200
Las Vegas, NM (McrSA)	540	541	534	536	536	546	542	550	490	422	Newberry, SC (McrSA)	267	295	354	357	407	410	448	431	378	376
Laurel, MS (McrSA)	376	432	421	428	404	385	339	177	105	85	Bluffton, IN (McrSA)	268	278	317	396	na	na	na	na	na	na
Laurinburg, NC (McrSA)	496	515	515	477	503	507	510	516	523	521	Hilo, HI (McrSA)	269	177	105	79	46	109	115	171	172	168
Lawrenceburg, TN (McrSA)	272	320	194	266	273	324	370	423	462	476	Richmond, IN (McrSA)	270	246	207	229	279	293	303	289	338	384
Lebanon, MO (McrSA)	292	407	371	282	311	317	345	390	384	421	Marshalltown, IA (McrSA)	271	269	271	212	227	192	113	224	305	248
Lebanon, NH-VT (McrSA)	4	3	3	20	12	19	11	3	10	28	Lawrenceburg, TN (McrSA)	272	320	194	266	273	324	370	423	462	476
Levelland, TX (McrSA)	463	441	433	398	322	352	361	291	287	348	Altus, OK (McrSA)	273	239	224	296	317	301	320	299	225	294
Lewisburg, PA (McrSA)	14	12	12	13	4	3	2	10	40	21	Safford, AZ (McrSA)	274	337	223	338	391	325	346	307	320	363
Lewisburg, TN (McrSA)	129	158	217	236	263	210	300	398	405	486	Sturgis, MI (McrSA)	275	358	318	362	352	378	382	412	438	461
Lewistown, PA (McrSA)	79	121	99	80	90	76	120	110	76	97	Sikeston, MO (McrSA)	276	282	361	429	455	459	391	311	205	163
Lexington, NE (McrSA)	289	333	279	350	284	272	283	357	282	252	Brookings, OR (McrSA)	277	253	256	302	354	382	403	430	485	472
Liberal, KS (McrSA)	232	296	345	376	327	328	375	260	182	154	Clearlake, CA (McrSA)	278	179	73	89	92	135	200	279	340	339
Lincoln, IL (McrSA)	477	474	486	494	473	478	495	491	486	468	Ottawa, IL (McrSA)	279	195	220	256	171	231	273	282	255	202
Lock Haven, PA (McrSA)	243	252	206	113	132	111	135	116	90	64	Owatonna, MN (McrSA)	280	260	166	170	241	279	328	317	231	214
Logansport, IN (McrSA)	449	449	414	447	477	485	473	428	447	490	Plymouth, IN (McrSA)	281	330	313	364	423	390	412	339	397	413
London, KY (McrSA)	375	365	357	345	346	389	354	402	356	289	Alamogordo, NM (McrSA)	282	284	295	311	353	329	325	313	263	188
Los Alamos, NM (McrSA)	50	55	37	70	123	165	102	204	236	159	Fort Leonard Wood, MO (McrSA)	283	218	255	294	288	346	327	219	125	37
Ludington, MI (McrSA)	448	409	439	436	376	393	367	447	403	479	Palestine, TX (McrSA)	284	250	215	240	297	226	167	237	164	236
Lufkin, TX (McrSA)	367	372	342	339	328	343	241	187	273	221	Amsterdam, NY (McrSA)	285	233	177	164	152	123	144	195	176	147
Lumberton, NC (McrSA)	397	436	448	444	471	470	494	492	504	500	Marinette, WI-MI (McrSA)	286	264	277	325	344	363	331	300	251	319
Macomb, IL (McrSA)	475	466	465	440	438	431	445	392	419	373	Worthington, MN (McrSA)	287	275	181	195	235	219	245	275	352	277
Madison, IN (McrSA)	94	92	69	126	134	155	132	173	259	267	Ruston, LA (McrSA)	288	328	285	314	238	205	188	97	41	23
Madisonville, KY (McrSA)	348	322	265	204	143	100	122	159	156	137	Lexington, NE (McrSA)	289	333	279	350	284	272	283	357	282	252

543 Metropolitan Areas	2024	2023	2022	2021	2020	2019	2018	2017	2016	2015	543 Micropolitan Areas	2024	2023	2022	2021	2020	2019	2018	2017	2016	2015
Magnolia, AR (McrSA)	528	528	536	538	511	516	517	488	451	469	Big Spring, TX (McrSA)	290	248	178	110	110	162	159	122	117	226
Malone, NY (McrSA)	211	197	281	255	264	268	212	262	203	136	Vincennes, IN (McrSA)	291	245	193	270	283	284	227	223	178	251
Malvern, AR (McrSA)	485	468	489	524	509	514	505	498	471	475	Lebanon, MO (McrSA)	292	407	371	282	311	317	345	390	384	421
Manitowoc, WI (McrSA)	176	182	187	200	172	128	73	85	121	123	Fort Polk South, LA (McrSA)	293	306	288	298	267	273	258	158	78	33
Marietta, OH (McrSA)	163	135	175	161	154	176	110	95	128	224	Olean, NY (McrSA)	294	289	294	222	179	168	103	115	134	61
Marinette, WI-MI (McrSA)	286	264	277	325	344	363	331	300	251	319	Crawfordsville, IN (McrSA)	295	344	343	346	377	347	268	349	424	452
Marion, IN (McrSA)	416	455	407	375	368	364	322	309	351	347	Urbana, OH (McrSA)	296	238	266	304	363	336	364	389	422	428
Marion, NC (McrSA)	388	416	384	410	429	432	451	479	500	504	Othello, WA (McrSA)	297	367	292	237	290	292	284	284	318	295
Marion, OH (McrSA)	384	294	267	186	223	286	336	335	244	237	Sandusky, OH (McrSA)	298	262	315	180	222	252	314	217	145	117
Marquette, MI (McrSA)	266	204	297	209	225	233	276	319	211	200	Riverton, WY (McrSA)	299	317	353	341	315	251	173	94	64	66
Marshall, MN (McrSA)	248	338	262	269	295	267	309	270	207	152	Mountain Home, AR (McrSA)	300	304	391	421	406	451	457	437	423	393
Marshall, MO (McrSA)	476	484	496	513	491	482	479	467	404	425	Sweetwater, TX (McrSA)	301	217	156	206	278	254	255	277	264	263
Marshalltown, IA (McrSA)	271	269	271	212	227	192	113	224	305	248	Pittsburg, KS (McrSA)	302	236	258	295	355	356	372	393	473	503
Martin, TN (McrSA)	265	332	167	226	291	349	422	427	449	457	Newport, TN (McrSA)	303	276	350	392	389	386	421	458	437	410
Martinsville, VA (McrSA)	491	513	482	510	486	513	504	519	512	483	Fort Morgan, CO (McrSA)	304	261	201	162	189	243	299	232	157	127
Maryville, MO (McrSA)	378	379	422	480	492	497	464	470	481	430	Athens, OH (McrSA)	305	223	231	175	184	149	127	156	206	114
Mason City, IA (McrSA)	164	189	233	207	193	146	105	76	160	79	Vermillion, SD (McrSA)	306	293	376	332	378	417	493	486	418	396
Mayfield, KY (McrSA)	429	463	478	487	495	499	501	502	505	485	Corinth, MS (McrSA)	307	368	388	352	335	361	378	413	371	335
Maysville, KY (McrSA)	405	404	408	417	366	387	379	332	386	405	Alpena, MI (McrSA)	308	377	363	348	367	366	432	474	413	417
McAlester, OK (McrSA)	488	451	431	400	338	398	313	202	118	105	Arcadia, FL (McrSA)	309	373	393	374	431	467	502	504	518	532
McComb, MS (McrSA)	493	477	497	525	528	527	527	443	439	498	Camden, AR (McrSA)	310	300	369	416	405	461	480	460	381	355
McMinnville, TN (McrSA)	240	274	307	358	416	428	393	472	430	454	Sterling, CO (McrSA)	311	291	237	214	150	89	75	45	70	146
McPherson, KS (McrSA)	171	152	236	159	176	126	128	37	83	142	Ponca City, OK (McrSA)	312	279	336	356	349	306	231	280	281	336
Meadville, PA (McrSA)	338	357	310	257	234	244	238	208	293	340	Houghton, MI (McrSA)	313	280	364	347	319	367	389	418	399	387
Menomonie, WI (McrSA)	85	105	82	135	140	174	187	170	109	94	Berlin, NH (McrSA)	314	265	259	323	332	350	399	383	385	292
Meridian, MS (McrSA)	351	331	333	393	339	341	317	285	196	118	Picayune, MS (McrSA)	315	394	418	452	435	472	497	452	376	381
Mexico, MO (McrSA)	438	437	453	424	392	331	384	361	343	392	New Castle, PA (McrSA)	316	342	254	211	266	300	251	178	144	124
Miami, OK (McrSA)	371	374	409	379	436	425	423	396	374	395	Gainesville, TX (McrSA)	317	321	304	227	206	264	206	113	96	185
Middlesborough, KY (McrSA)	534	529	535	530	533	544	539	542	530	518	Cambridge, MD (McrSA)	318	286	248	312	271	229	265	295	354	272
Milledgeville, GA (McrSA)	494	490	498	520	505	496	509	531	495	508	Danville, KY (McrSA)	319	336	355	412	411	427	376	380	452	446
Minden, LA (McrSA)	468	495	457	491	459	na	na	na	na	na	Huntingdon, PA (McrSA)	320	302	287	233	257	312	295	287	328	337
Mineral Wells, TX (McrSA)	444	465	435	420	400	394	407	316	220	256	Escanaba, MI (McrSA)	321	251	238	216	247	313	366	401	379	333
Minot, ND (McrSA)	95	97	120	145	50	77	25	5	3	6	Coldwater, MI (McrSA)	322	234	290	373	369	419	478	497	499	509
Mitchell, SD (McrSA)	31	34	57	76	63	62	55	33	73	13	Austin, MN (McrSA)	323	308	293	285	294	263	178	213	190	247
Moberly, MO (McrSA)	120	200	183	166	207	193	233	184	101	132	Palatka, FL (McrSA)	324	311	389	385	439	494	515	524	509	506
Montrose, CO (McrSA)	111	102	63	121	164	232	291	368	365	299	Clinton, IA (McrSA)	325	271	308	273	320	276	272	296	217	172
Morehead City, NC (McrSA)	41	62	141	118	145	125	208	294	332	282	Shawano, WI (McrSA)	326	325	253	324	286	278	240	253	249	203
Morgan City, LA (McrSA)	452	483	441	457	440	440	368	257	185	268	North Vernon, IN (McrSA)	327	258	301	370	430	465	465	435	468	458
Moscow, ID (McrSA)	146	104	157	205	188	169	184	278	358	434	Cadillac, MI (McrSA)	328	387	387	351	393	408	485	508	497	517
Moses Lake, WA (McrSA)	100	159	58	101	126	92	96	120	130	161	Mount Pleasant, MI (McrSA)	329	363	305	288	255	256	257	333	289	343
Moultrie, GA (McrSA)	401	450	463	484	490	488	499	515	475	459	Ardmore, OK (McrSA)	330	316	243	300	212	181	134	66	38	100
Mount Airy, NC (McrSA)	246	301	286	284	252	302	342	411	479	477	Sault Ste. Marie, MI (McrSA)	331	395	440	482	502	504	488	414	344	270
Mount Gay-Shamrock, WV (McrSA)	522	525	525	521	525	535	538	521	480	400	Tiffin, OH (McrSA)	332	312	367	327	342	318	287	308	311	287
Mount Pleasant, MI (McrSA)	329	363	305	288	255	256	257	333	289	343	Branson, MO (McrSA)	333	370	411	235	244	250	308	345	361	403
Mount Pleasant, TX (McrSA)	152	203	284	361	308	396	304	234	247	178	Freeport, IL (McrSA)	334	303	344	394	382	370	416	420	432	402
Mount Sterling, KY (McrSA)	458	493	469	498	467	476	452	405	417	407	Borger, TX (McrSA)	335	263	320	278	201	138	196	193	147	193
Mount Vernon, IL (McrSA)	391	347	316	274	314	344	321	255	173	180	Sterling, IL (McrSA)	336	352	396	363	383	399	476	406	383	342
Mount Vernon, OH (McrSA)	134	74	61	59	57	60	51	57	61	80	Ashtabula, OH (McrSA)	337	314	329	297	351	365	400	408	456	442
Mountain Home, AR (McrSA)	300	304	391	421	406	451	457	437	423	393	Meadville, PA (McrSA)	338	357	310	257	234	244	238	208	293	340
Mountain Home, ID (McrSA)	138	164	179	238	299	287	253	328	330	306	Fairmont, WV (McrSA)	339	362	322	315	281	310	219	129	59	3

543 Micropolitan Areas	2024	2023	2022	2021	2020	2019	2018	2017	2016	2015	543 Micropolitan Areas	2024	2023	2022	2021	2020	2019	2018	2017	2016	2015
Murray, KY (McrSA)	402	405	474	431	412	414	385	421	353	284	Selinsgrove, PA (McrSA)	340	390	352	234	163	97	190	281	335	356
Muscatine, IA (McrSA)	169	192	132	168	160	114	108	93	21	63	Waycross, GA (McrSA)	341	400	402	322	312	323	353	417	406	433
Muskogee, OK (McrSA)	352	349	251	194	229	179	163	128	75	82	Rochelle, IL (McrSA)	342	361	330	388	375	368	433	370	392	354
Nacogdoches, TX (McrSA)	229	287	347	343	287	298	249	209	165	150	Salem, OH (McrSA)	343	270	339	399	399	373	292	211	204	246
Natchez, MS-LA (McrSA)	501	512	519	528	520	519	513	477	396	415	Payson, AZ (McrSA)	344	420	374	377	358	376	466	442	442	436
Natchitoches, LA (McrSA)	399	443	377	299	310	338	381	340	313	301	Grand Rapids, MN (McrSA)	345	324	306	268	316	384	293	190	na	na
New Castle, IN (McrSA)	417	412	399	434	476	500	491	511	516	514	Jamestown-Dunkirk-Fredonia, NY (McrSA)	346	288	326	277	258	277	266	314	346	312
New Castle, PA (McrSA)	316	342	254	211	266	300	251	178	144	124	Bay City, TX (McrSA)	347	310	403	330	293	227	194	242	306	352
New Philadelphia-Dover, OH (McrSA)	155	128	158	91	66	20	22	49	132	204	Madisonville, KY (McrSA)	348	322	265	204	143	100	122	159	156	137
New Ulm, MN (McrSA)	219	257	241	242	298	266	275	245	310	326	Pecos, TX (McrSA)	349	341	312	172	243	305	307	326	390	460
Newberry, SC (McrSA)	267	295	354	357	407	410	448	431	378	376	Farmington, MO (McrSA)	350	351	359	333	285	320	341	364	363	314
Newport, OR (McrSA)	154	108	110	50	101	159	230	306	380	368	Meridian, MS (McrSA)	351	331	333	393	339	341	317	285	196	118
Newport, TN (McrSA)	303	276	350	392	389	386	421	458	437	410	Muskogee, OK (McrSA)	352	349	251	194	229	179	163	128	75	82
Nogales, AZ (McrSA)	251	385	303	213	136	187	226	169	210	245	Vernal, UT (McrSA)	353	428	444	395	321	299	256	174	166	242
Norfolk, NE (McrSA)	48	61	125	183	128	118	151	140	179	119	Atmore, AL (McrSA)	354	350	392	368	372	342	356	400	na	na
North Platte, NE (McrSA)	159	180	212	289	204	157	121	70	110	75	Sayre, PA (McrSA)	355	360	334	309	276	225	155	69	35	26
North Vernon, IN (McrSA)	327	258	301	370	430	465	465	435	468	458	Brownwood, TX (McrSA)	356	369	382	334	301	265	237	238	299	259
North Wilkesboro, NC (McrSA)	395	471	491	502	504	509	506	522	531	516	Rockport, TX (McrSA)	357	424	452	427	424	na	na	na	na	na
Norwalk, OH (McrSA)	153	106	109	99	114	136	95	162	243	269	DuBois, PA (McrSA)	358	290	276	230	277	330	289	240	195	199
Oak Harbor, WA (McrSA)	27	23	23	11	15	15	90	172	268	283	Guymon, OK (McrSA)	359	268	351	380	313	307	218	124	200	241
Ogdensburg-Massena, NY (McrSA)	213	140	188	179	211	236	192	180	104	88	Corsicana, TX (McrSA)	360	375	365	360	419	422	352	226	226	235
Oil City, PA (McrSA)	474	460	460	415	428	441	446	391	440	399	Burlington, IA-IL (McrSA)	361	343	401	349	275	213	175	191	270	207
Okeechobee, FL (McrSA)	419	417	425	397	409	400	449	436	367	345	Evanston, WY (McrSA)	362	355	366	353	362	372	330	297	254	213
Olean, NY (McrSA)	294	289	294	222	179	168	103	115	134	61	Portsmouth, OH (McrSA)	363	319	372	371	401	418	398	366	333	290
Oneonta, NY (McrSA)	126	64	85	49	75	74	111	141	141	89	Snyder, TX (McrSA)	364	366	319	336	333	295	170	98	94	176
Ontario, OR-ID (McrSA)	210	230	164	219	282	321	373	374	446	409	Beatrice, NE (McrSA)	365	427	472	455	427	463	468	438	387	350
Opelousas, LA (McrSA)	406	371	324	381	334	296	242	146	74	58	Bonham, TX (McrSA)	366	334	235	192	240	280	297	324	na	na
Orangeburg, SC (McrSA)	483	457	437	435	456	450	458	451	375	330	Lufkin, TX (McrSA)	367	372	342	339	328	343	241	187	273	221
Oskaloosa, IA (McrSA)	369	335	373	335	386	406	397	440	425	444	Jesup, GA (McrSA)	368	364	379	384	415	456	443	432	398	329
Othello, WA (McrSA)	297	367	292	237	290	292	284	284	318	295	Oskaloosa, IA (McrSA)	369	335	373	335	386	406	397	440	425	444
Ottawa, IL (McrSA)	279	195	220	256	171	231	273	282	255	202	Clovis, NM (McrSA)	370	384	291	262	192	112	162	96	30	31
Ottawa, KS (McrSA)	113	51	62	78	196	151	202	286	359	370	Miami, OK (McrSA)	371	374	409	379	436	425	423	396	374	395
Ottumwa, IA (McrSA)	223	215	199	245	194	166	133	168	230	223	Fort Madison-Keokuk, IA-IL-MO (McrSA)	372	356	447	460	417	353	306	336	366	429
Owatonna, MN (McrSA)	280	260	166	170	241	279	328	317	231	214	Frankfort, IN (McrSA)	373	398	394	439	458	483	454	463	427	438
Oxford, MS (McrSA)	51	63	31	28	8	9	49	36	17	17	Athens, TX (McrSA)	374	389	397	407	357	345	239	233	234	320
Ozark, AL (McrSA)	182	149	163	191	174	167	179	181	137	72	London, KY (McrSA)	375	365	357	345	346	389	354	402	356	289
Paducah, KY-IL (McrSA)	172	209	196	130	76	41	79	32	32	19	Laurel, MS (McrSA)	376	432	421	428	404	385	339	177	105	85
Pahrump, NV (McrSA)	96	163	204	171	233	294	358	426	342	317	West Plains, MO (McrSA)	377	414	479	481	483	505	503	473	466	488
Palatka, FL (McrSA)	324	311	389	385	439	494	515	524	509	506	Maryville, MO (McrSA)	378	379	422	480	492	497	464	470	481	430
Palestine, TX (McrSA)	284	250	215	240	297	226	167	237	164	236	Dublin, GA (McrSA)	379	318	302	331	364	377	386	482	443	427
Pampa, TX (McrSA)	472	425	462	411	329	322	236	130	122	173	Hereford, TX (McrSA)	380	413	331	391	402	434	419	341	300	344
Paragould, AR (McrSA)	185	190	229	221	209	217	166	216	308	380	Big Rapids, MI (McrSA)	381	327	300	271	219	261	311	409	377	412
Paris, TN (McrSA)	55	69	122	66	59	54	149	252	316	249	Douglas, GA (McrSA)	382	435	427	418	463	480	461	493	491	505
Paris, TX (McrSA)	194	176	172	124	112	71	104	101	47	68	Craig, CO (McrSA)	383	299	219	276	274	241	278	323	253	158
Parsons, KS (McrSA)	453	480	476	441	449	433	470	439	460	470	Marion, OH (McrSA)	384	294	267	186	223	286	336	335	244	237
Payson, AZ (McrSA)	344	420	374	377	358	376	466	442	442	436	Dixon, IL (McrSA)	385	307	340	359	331	304	369	346	292	262
Pearsall, TX (McrSA)	408	378	341	340	340	379	na	na	na	na	Cedartown, GA (McrSA)	386	430	451	419	422	423	409	386	457	471



543 Micropolitan Areas	2024	2023	2022	2021	2020	2019	2018	2017	2016	2015	543 Micropolitan Areas	2024	2023	2022	2021	2020	2019	2018	2017	2016	2015
Pecos, TX (McrSA)	349	341	312	172	243	305	307	326	390	460	Somerset, KY (McrSA)	387	380	349	248	318	355	305	334	395	385
Pella, IA (McrSA)	67	48	93	104	116	101	147	251	na	na	Marion, NC (McrSA)	388	416	384	410	429	432	451	479	500	504
Peru, IN (McrSA)	507	478	456	470	497	520	475	487	517	527	Huntington, IN (McrSA)	389	393	400	430	453	457	441	445	433	491
Picayune, MS (McrSA)	315	394	418	452	435	472	497	452	376	381	Elk City, OK (McrSA)	390	326	321	250	191	182	87	30	6	12
Pierre, SD (McrSA)	135	86	150	117	67	98	57	114	91	91	Mount Vernon, IL (McrSA)	391	347	316	274	314	344	321	255	173	180
Pinehurst-Southern Pines, NC (McrSA)	10	21	39	53	43	44	27	103	149	121	Kirksville, MO (McrSA)	392	396	432	479	450	471	487	500	436	369
Pittsburg, KS (McrSA)	302	236	258	295	355	356	372	393	473	503	Show Low, AZ (McrSA)	393	431	328	367	360	335	387	404	368	378
Plainview, TX (McrSA)	518	507	471	465	498	511	429	441	421	466	Elkins, WV (McrSA)	394	433	380	329	361	369	332	318	283	191
Platteville, WI (McrSA)	121	73	76	106	167	154	154	152	135	164	North Wilkesboro, NC (McrSA)	395	471	491	502	504	509	506	522	531	516
Plattsburgh, NY (McrSA)	107	88	98	64	26	40	37	25	55	36	Tahlequah, OK (McrSA)	396	359	426	443	371	333	294	371	278	297
Plymouth, IN (McrSA)	281	330	313	364	423	390	412	339	397	413	Lumberton, NC (McrSA)	397	436	448	444	471	470	494	492	504	500
Point Pleasant, WV-OH (McrSA)	484	447	458	464	443	479	450	464	401	316	LaGrande, OR (McrSA)	398	340	325	305	269	326	335	377	445	389
Ponca City, OK (McrSA)	312	279	336	356	349	306	231	280	281	336	Natchitoches, LA (McrSA)	399	443	377	299	310	338	381	340	313	301
Pontiac, IL (McrSA)	208	267	270	272	259	270	262	207	280	211	Greenville, TN (McrSA)	400	438	390	422	421	404	347	372	415	484
Poplar Bluff, MO (McrSA)	423	452	442	499	482	426	394	343	245	201	Moultrie, GA (McrSA)	401	450	463	484	490	488	499	515	475	459
Port Angeles, WA (McrSA)	36	26	33	29	74	106	164	231	212	166	Murray, KY (McrSA)	402	405	474	431	412	414	385	421	353	284
Port Lavaca, TX (McrSA)	84	129	130	119	185	235	156	61	51	113	Harrison, AR (McrSA)	403	382	386	451	379	395	388	429	350	285
Portales, NM (McrSA)	538	540	527	534	537	539	536	541	492	482	Cornelia, GA (McrSA)	404	446	406	413	408	421	418	478	461	473
Portsmouth, OH (McrSA)	363	319	372	371	401	418	398	366	333	290	Maysville, KY (McrSA)	405	404	408	417	366	387	379	332	386	405
Pottsville, PA (McrSA)	177	183	171	147	138	161	158	143	127	120	Opelousas, LA (McrSA)	406	371	324	381	334	296	242	146	74	58
Price, UT (McrSA)	424	392	428	463	451	468	484	399	345	360	Great Bend, KS (McrSA)	407	445	449	423	380	383	348	293	252	322
Prineville, OR (McrSA)	98	172	142	249	324	337	359	397	373	414	Pearsall, TX (McrSA)	408	378	341	340	340	379	na	na	na	na
Pullman, WA (McrSA)	49	20	8	16	21	22	106	92	124	102	DeRidder, LA (McrSA)	409	459	459	450	433	444	408	327	242	318
Quincy, IL-MO (McrSA)	141	116	88	85	68	55	62	107	189	126	West Point, MS (McrSA)	410	462	502	471	426	458	401	419	na	na
Raymondville, TX (McrSA)	535	537	537	533	530	534	548	520	513	513	Hillsdale, MI (McrSA)	411	456	450	404	403	435	436	476	474	492
Red Bluff, CA (McrSA)	88	67	18	10	27	36	59	127	148	187	Susanville, CA (McrSA)	412	339	198	185	158	199	221	321	274	195
Red Wing, MN (McrSA)	78	131	91	42	65	91	70	58	138	129	Emporia, KS (McrSA)	413	388	438	354	390	416	425	457	477	465
Rexburg, ID (McrSA)	162	138	176	246	307	315	282	351	391	423	Jackson, OH (McrSA)	414	383	296	372	370	357	333	387	339	310
Richmond, IN (McrSA)	270	246	207	229	279	293	303	289	338	384	Uvalde, TX (McrSA)	415	397	360	387	326	274	157	137	216	228
Richmond-Berea, KY (McrSA)	231	315	249	224	215	196	168	166	154	111	Marion, IN (McrSA)	416	455	407	375	368	364	322	309	351	347
Rio Grande City-Roma, TX (McrSA)	502	488	481	448	448	454	424	344	248	296	New Castle, IN (McrSA)	417	412	399	434	476	500	491	511	516	514
Riverton, WY (McrSA)	299	317	353	341	315	251	173	94	64	66	Del Rio, TX (McrSA)	418	454	273	201	198	188	71	68	85	90
Roanoke Rapids, NC (McrSA)	461	499	500	496	508	508	531	528	498	451	Okeechobee, FL (McrSA)	419	417	425	397	409	400	449	436	367	345
Rochelle, IL (McrSA)	342	361	330	388	375	368	433	370	392	354	Bedford, IN (McrSA)	420	354	314	366	414	439	474	475	502	512
Rock Springs, WY (McrSA)	90	124	155	87	70	59	67	20	31	24	Alexander City, AL (McrSA)	421	422	420	461	432	392	453	499	na	na
Rockingham, NC (McrSA)	446	492	510	507	489	495	431	501	493	499	Coshocton, OH (McrSA)	422	458	511	490	481	481	437	354	408	420
Rockport, TX (McrSA)	357	424	452	427	424	na	na	na	na	na	Poplar Bluff, MO (McrSA)	423	452	442	499	482	426	394	343	245	201
Rolla, MO (McrSA)	119	110	101	115	137	137	130	189	174	106	Price, UT (McrSA)	424	392	428	463	451	468	484	399	345	360
Roseburg, OR (McrSA)	150	117	75	103	147	194	260	329	370	390	Adrian, MI (McrSA)	425	439	443	437	395	453	460	480	469	455
Roswell, NM (McrSA)	473	505	446	458	410	388	439	385	364	374	Weatherford, OK (McrSA)	426	381	362	313	236	234	232	132	65	143
Ruidoso, NM (McrSA)	515	509	495	505	526	532	518	525	na	na	Cambridge, OH (McrSA)	427	346	337	239	182	103	77	39	120	183
Russellville, AR (McrSA)	454	391	445	426	396	371	349	353	314	375	Shawnee, OK (McrSA)	428	345	484	445	413	405	344	246	202	234
Ruston, LA (McrSA)	288	328	285	314	238	205	188	97	41	23	Mayfield, KY (McrSA)	429	463	478	487	495	499	501	502	505	485
Rutland, VT (McrSA)	198	206	148	92	135	163	197	218	223	192	Washington Court House, OH (McrSA)	430	423	410	425	397	413	340	469	476	449
Safford, AZ (McrSA)	274	337	223	338	391	325	346	307	320	363	El Dorado, AR (McrSA)	431	386	413	432	385	354	274	215	201	160
Salem, OH (McrSA)	343	270	339	399	399	373	292	211	204	246	Grenada, MS (McrSA)	432	434	358	390	434	473	456	483	487	510
Salina, KS (McrSA)	123	127	86	46	56	32	91	118	126	67	Clewiston, FL (McrSA)	433	461	464	485	501	526	519	530	522	507
Sandpoint, ID (McrSA)	105	123	151	220	246	297	374	446	410	406	Jacksonville, IL (McrSA)	434	348	398	442	381	412	395	362	416	391

543 Micropolitan Areas	2024	2023	2022	2021	2020	2019	2018	2017	2016	2015	543 Micropolitan Areas	2024	2023	2022	2021	2020	2019	2018	2017	2016	2015
Sandusky, OH (McrSA)	298	262	315	180	222	252	314	217	145	117	Coffeyville, KS (McrSA)	435	429	488	446	454	462	440	367	297	255
Sanford, NC (McrSA)	139	169	174	198	208	248	243	331	307	218	Warren, PA (McrSA)	436	421	416	365	300	281	248	151	180	258
Sault Ste. Marie, MI (McrSA)	331	395	440	482	502	504	488	414	344	270	Somerset, PA (McrSA)	437	415	378	310	265	316	365	358	319	281
Sayre, PA (McrSA)	355	360	334	309	276	225	155	69	35	26	Mexico, MO (McrSA)	438	437	453	424	392	331	384	361	343	392
Scottsbluff, NE (McrSA)	197	249	226	291	210	189	112	131	50	55	Scottsboro, AL (McrSA)	439	399	466	454	452	464	486	461	389	411
Scottsboro, AL (McrSA)	439	399	466	454	452	464	486	461	389	411	Sunbury, PA (McrSA)	440	418	346	317	325	255	254	325	301	271
Scottsburg, IN (McrSA)	478	419	405	408	418	na	na	na	na	na	Wabash, IN (McrSA)	441	402	385	386	394	447	371	381	327	401
Searcy, AR (McrSA)	253	297	356	406	437	415	415	376	295	219	Toccoa, GA (McrSA)	442	491	513	478	445	420	383	315	227	304
Sedalia, MO (McrSA)	195	211	230	228	280	291	277	235	266	302	Fairmont, MN (McrSA)	443	411	423	414	466	443	428	459	na	na
Selinsgrove, PA (McrSA)	340	390	352	234	163	97	190	281	335	356	Mineral Wells, TX (McrSA)	444	465	435	420	400	394	407	316	220	256
Selma, AL (McrSA)	500	486	468	489	500	506	508	514	459	481	Fairfield, IA (McrSA)	445	376	415	389	441	391	355	425	453	502
Seneca Falls, NY (McrSA)	200	185	252	196	237	240	214	273	213	220	Rockingham, NC (McrSA)	446	492	510	507	489	495	431	501	493	499
Seneca, SC (McrSA)	77	84	137	123	117	122	174	272	275	349	St. Marys, PA (McrSA)	447	408	370	292	216	269	329	352	na	na
Sevierville, TN (McrSA)	63	31	34	44	40	35	68	176	261	165	Ludington, MI (McrSA)	448	409	439	436	376	393	367	447	403	479
Seymour, IN (McrSA)	59	76	56	83	97	73	21	79	93	175	Logansport, IN (McrSA)	449	449	414	447	477	485	473	428	447	490
Shawano, WI (McrSA)	326	325	253	324	286	278	240	253	249	203	Woodward, OK (McrSA)	450	410	404	321	261	238	290	167	95	157
Shawnee, OK (McrSA)	428	345	484	445	413	405	344	246	202	234	Vidalia, GA (McrSA)	451	444	499	497	469	469	444	444	411	365
Shelby, NC (McrSA)	214	298	222	247	309	351	411	466	467	453	Morgan City, LA (McrSA)	452	483	441	457	440	440	368	257	185	268
Shelbyville, TN (McrSA)	16	57	83	107	83	43	33	67	82	93	Parsons, KS (McrSA)	453	480	476	441	449	433	470	439	460	470
Shelton, WA (McrSA)	58	75	46	54	113	153	222	304	298	254	Russellville, AR (McrSA)	454	391	445	426	396	371	349	353	314	375
Sheridan, WY (McrSA)	106	89	59	102	78	61	26	23	24	49	Forest City, NC (McrSA)	455	481	467	492	523	540	535	540	526	524
Show Low, AZ (McrSA)	393	431	328	367	360	335	387	404	368	378	Bradford, PA (McrSA)	456	426	430	383	323	332	351	330	323	303
Sidney, OH (McrSA)	133	100	43	24	28	18	12	27	67	95	Winfield, KS (McrSA)	457	469	501	486	457	437	402	303	246	305
Sikeston, MO (McrSA)	276	282	361	429	455	459	391	311	205	163	Mount Sterling, KY (McrSA)	458	493	469	498	467	476	452	405	417	407
Silver City, NM (McrSA)	516	519	529	515	518	530	549	539	525	528	Bucyrus-Galion, OH (McrSA)	459	442	436	453	478	487	471	494	483	496
Snyder, TX (McrSA)	364	366	319	336	333	295	170	98	94	176	El Campo, TX (McrSA)	460	406	368	308	365	380	301	205	171	243
Somerset, KY (McrSA)	387	380	349	248	318	355	305	334	395	385	Roanoke Rapids, NC (McrSA)	461	499	500	496	508	508	531	528	498	451
Somerset, PA (McrSA)	437	415	378	310	265	316	365	358	319	281	Eagle Pass, TX (McrSA)	462	401	335	267	214	249	213	149	209	238
Sonora, CA (McrSA)	199	146	90	39	84	119	171	254	331	307	Levelland, TX (McrSA)	463	441	433	398	322	352	361	291	287	348
Spearfish, SD (McrSA)	39	17	74	75	72	83	140	230	296	239	Duncan, OK (McrSA)	464	470	454	402	348	334	350	165	116	205
Spencer, IA (McrSA)	74	83	162	177	130	191	198	105	168	145	Vernon, TX (McrSA)	465	482	493	459	479	429	414	365	271	227
Spirit Lake, IA (McrSA)	193	173	221	231	251	178	100	112	198	257	Arkadelphia, AR (McrSA)	466	476	375	378	398	442	430	468	470	435
St. Marys, GA (McrSA)	225	214	211	125	148	220	286	201	187	230	Deming, NM (McrSA)	467	500	455	462	519	529	459	360	272	182
St. Marys, PA (McrSA)	447	408	370	292	216	269	329	352	na	na	Minden, LA (McrSA)	468	495	457	491	459	na	na	na	na	na
Starkville, MS (McrSA)	241	259	272	279	202	185	137	154	229	216	Bluefield, WV-VA (McrSA)	469	479	475	468	420	452	377	301	208	144
Statesboro, GA (McrSA)	212	202	257	263	230	245	267	347	324	351	Fort Payne, AL (McrSA)	470	464	516	523	513	528	526	533	na	na
Steamboat Springs, CO (McrSA)	101	134	143	181	181	215	207	119	54	78	Wauchula, FL (McrSA)	471	494	503	517	512	521	516	513	528	534
Stephenville, TX (McrSA)	178	122	118	155	166	211	285	310	321	371	Pampa, TX (McrSA)	472	425	462	411	329	322	236	130	122	173
Sterling, CO (McrSA)	311	291	237	214	150	89	75	45	70	146	Roswell, NM (McrSA)	473	505	446	458	410	388	439	385	364	374
Sterling, IL (McrSA)	336	352	396	363	383	399	476	406	383	342	Oil City, PA (McrSA)	474	460	460	415	428	441	446	391	440	399
Stevens Point, WI (McrSA)	26	25	15	23	22	24	38	44	111	76	Macomb, IL (McrSA)	475	466	465	440	438	431	445	392	419	373
Stillwater, OK (McrSA)	250	232	327	303	232	203	145	72	12	53	Marshall, MO (McrSA)	476	484	496	513	491	482	479	467	404	425
Storm Lake, IA (McrSA)	217	240	202	215	205	230	204	109	89	149	Lincoln, IL (McrSA)	477	474	486	494	473	478	495	491	486	468
Sturgis, MI (McrSA)	275	358	318	362	352	378	382	412	438	461	Scottsburg, IN (McrSA)	478	419	405	408	418	na	na	na	na	na
Sulphur Springs, TX (McrSA)	136	231	283	355	374	308	225	145	88	115	Gaffney, SC (McrSA)	479	403	434	403	373	402	469	456	455	424
Summerville, GA (McrSA)	536	539	540	531	506	489	455	535	529	536	Greenwood, MS (McrSA)	480	440	461	506	517	522	523	490	402	359
Sunbury, PA (McrSA)	440	418	346	317	325	255	254	325	301	271	Atchison, KS (McrSA)	481	453	492	433	470	493	524	529	521	531
Susanville, CA (McrSA)	412	339	198	185	158	199	221	321	274	195	Jennings, LA (McrSA)	482	487	483	472	464	445	434	378	na	na
Sweetwater, TX (McrSA)	301	217	156	206	278	254	255	277	264	263	Orangeburg, SC (McrSA)	483	457	437	435	456	450	458	451	375	330
Tahlequah, OK (McrSA)	396	359	426	443	371	333	294	371	278	297	Point Pleasant, WV-OH (McrSA)	484	447	458	464	443	479	450	464	401	316

543 Micropolitan Areas	2024	2023	2022	2021	2020	2019	2018	2017	2016	2015	543 Micropolitan Areas	2024	2023	2022	2021	2020	2019	2018	2017	2016	2015
Talladega-Sylacauga, AL (McrSA)	226	243	205	253	268	283	259	322	284	361	Malvern, AR (McrSA)	485	468	489	524	509	514	505	498	471	475
Taos, NM (McrSA)	524	527	514	456	485	475	521	527	489	474	Brownsville, TN (McrSA)	486	467	477	469	515	503	525	526	na	na
Taylorville, IL (McrSA)	489	472	490	504	494	490	500	485	503	489	Bennettsville, SC (McrSA)	487	448	424	405	442	455	498	503	484	418
The Dalles, OR (McrSA)	104	79	41	45	30	21	46	63	92	99	McAlester, OK (McrSA)	488	451	431	400	338	398	313	202	118	105
Thomaston, GA (McrSA)	510	506	520	518	514	525	522	523	510	497	Taylorville, IL (McrSA)	489	472	490	504	494	490	500	485	503	489
Thomasville, GA (McrSA)	186	171	209	223	249	314	296	261	188	128	Danville, VA (McrSA)	490	489	419	467	446	430	390	462	464	388
Tiffin, OH (McrSA)	332	312	367	327	342	318	287	308	311	287	Martinsville, VA (McrSA)	491	513	482	510	486	513	504	519	512	483
Tifton, GA (McrSA)	252	281	338	287	343	319	246	186	228	264	Jacksonville, TX (McrSA)	492	497	480	473	472	477	413	384	337	398
Toccoa, GA (McrSA)	442	491	513	478	445	420	383	315	227	304	McComb, MS (McrSA)	493	477	497	525	528	527	527	443	439	498
Torrington, CT (McrSA)	18	36	50	34	86	88	47	11	33	47	Milledgeville, GA (McrSA)	494	490	498	520	505	496	509	531	495	508
Traverse City, MI (McrSA)	12	15	17	38	20	28	4	17	42	103	Cordele, GA (McrSA)	495	501	523	503	521	524	530	538	524	523
Troy, AL (McrSA)	170	201	264	326	296	242	326	265	192	233	Laurinburg, NC (McrSA)	496	515	515	477	503	507	510	516	523	521
Truckee-Grass Valley, CA (McrSA)	42	38	27	19	11	11	3	48	133	131	Kingsville, TX (McrSA)	497	475	412	438	388	348	252	147	163	190
Tullahoma-Manchester, TN (McrSA)	22	39	29	56	37	51	64	86	66	86	Centralia, IL (McrSA)	498	504	509	476	462	484	492	453	431	386
Tupelo, MS (McrSA)	117	103	97	108	102	110	53	62	79	71	Campbellsville, KY (McrSA)	499	473	429	483	461	401	472	489	478	487
Ukiah, CA (McrSA)	203	166	124	52	87	94	88	153	241	244	Selma, AL (McrSA)	500	486	468	489	500	506	508	514	459	481
Union City, TN (McrSA)	221	329	383	382	444	501	496	505	458	450	Natchez, MS-LA (McrSA)	501	512	519	528	520	519	513	477	396	415
Union, SC (McrSA)	517	503	505	449	475	na	na	na	na	na	Rio Grande City-Roma, TX (McrSA)	502	488	481	448	448	454	424	344	248	296
Urbana, OH (McrSA)	296	238	266	304	363	336	364	389	422	428	Bainbridge, GA (McrSA)	503	508	530	529	529	537	533	547	494	464
Uvalde, TX (McrSA)	415	397	360	387	326	274	157	137	216	228	Cleveland, MS (McrSA)	504	516	528	527	516	523	489	449	463	408
Van Wert, OH (McrSA)	262	198	225	260	330	374	360	359	382	394	Blytheville, AR (McrSA)	505	485	485	488	524	533	483	484	407	456
Vermillion, SD (McrSA)	306	293	376	332	378	417	493	486	418	396	Henderson, NC (McrSA)	506	523	524	519	510	510	481	510	488	478
Vernal, UT (McrSA)	353	428	444	395	321	299	256	174	166	242	Peru, IN (McrSA)	507	478	456	470	497	520	475	487	517	527
Vernon, TX (McrSA)	465	482	493	459	479	429	414	365	271	227	Lamesa, TX (McrSA)	508	517	508	500	484	460	426	375	347	404
Vicksburg, MS (McrSA)	259	277	298	344	387	436	435	415	325	253	Galesburg, IL (McrSA)	509	510	512	501	480	448	357	355	412	397
Vidalia, GA (McrSA)	451	444	499	497	469	469	444	444	411	365	Thomaston, GA (McrSA)	510	506	520	518	514	525	522	523	510	497
Vincennes, IN (McrSA)	291	245	193	270	283	284	227	223	178	251	Big Stone Gap, VA (McrSA)	511	498	494	495	488	498	511	395	304	189
Vineyard Haven, MA (McrSA)	56	27	44	3	2	26	29	14	23	18	Glasgow, KY (McrSA)	512	496	470	493	465	492	462	450	501	522
Wabash, IN (McrSA)	441	402	385	386	394	447	371	381	327	401	Bogalusa, LA (McrSA)	513	514	518	512	496	491	463	422	414	467
Wahpeton, ND-MN (McrSA)	224	212	200	251	173	208	210	225	303	315	Grants, NM (McrSA)	514	520	417	475	487	446	477	496	482	447
Wapakoneta, OH (McrSA)	137	99	117	69	61	80	101	150	215	293	Ruidoso, NM (McrSA)	515	509	495	505	526	532	518	525	na	na
Warren, PA (McrSA)	436	421	416	365	300	281	248	151	180	258	Silver City, NM (McrSA)	516	519	529	515	518	530	549	539	525	528
Warrensburg, MO (McrSA)	115	98	102	165	199	260	323	258	175	179	Union, SC (McrSA)	517	503	505	449	475	na	na	na	na	na
Warsaw, IN (McrSA)	116	137	145	157	165	156	141	59	106	139	Plainview, TX (McrSA)	518	507	471	465	498	511	429	441	421	466
Washington Court House, OH (McrSA)	430	423	410	425	397	413	340	469	476	449	Alice, TX (McrSA)	519	518	506	511	468	449	315	192	140	215
Washington, IN (McrSA)	21	49	24	31	45	42	86	121	193	196	Americus, GA (McrSA)	520	502	487	509	507	512	528	518	496	501
Washington, NC (McrSA)	264	305	348	401	425	411	406	403	450	437	Greenville, MS (McrSA)	521	511	517	514	522	515	514	507	511	515
Watertown, SD (McrSA)	69	72	140	202	169	212	209	163	221	140	Mount Gay-Shamrock, WV (McrSA)	522	525	525	521	525	535	538	521	480	400
Watertown-Fort Atkinson, WI (McrSA)	72	52	79	116	93	121	74	75	152	153	Beeville, TX (McrSA)	523	522	504	522	493	502	417	302	219	288
Wauchula, FL (McrSA)	471	494	503	517	512	521	516	513	528	534	Taos, NM (McrSA)	524	527	514	456	485	475	521	527	489	474
Waycross, GA (McrSA)	341	400	402	322	312	323	353	417	406	433	Fitzgerald, GA (McrSA)	525	535	538	539	538	550	541	551	536	535
Weatherford, OK (McrSA)	426	381	362	313	236	234	232	132	65	143	Central City, KY (McrSA)	526	524	522	466	460	409	482	424	na	na
West Plains, MO (McrSA)	377	414	479	481	483	505	503	473	466	488	Eufaula, AL-GA (McrSA)	527	530	532	542	532	541	534	532	na	na
West Point, MS (McrSA)	410	462	502	471	426	458	401	419	na	na	Magnolia, AR (McrSA)	528	528	536	538	511	516	517	488	451	469

543 Micropolitan Areas	2024	2023	2022	2021	2020	2019	2018	2017	2016	2015	543 Micropolitan Areas	2024	2023	2022	2021	2020	2019	2018	2017	2016	2015
Whitewater, WI (McrSA)	23	24	22	26	25	31	30	54	98	141	Connersville, IN (McrSA)	529	521	473	508	527	531	529	512	527	519
Williston, ND (McrSA)	65	42	55	48	42	69	41	2	2	2	Hope, AR (McrSA)	530	531	533	537	531	543	537	534	na	na
Willmar, MN (McrSA)	201	199	115	88	82	66	84	80	114	135	Zapata, TX (McrSA)	531	526	526	516	474	486	392	206	136	156
Wilmington, OH (McrSA)	118	120	160	114	118	148	195	290	276	265	Española, NM (McrSA)	532	538	521	526	534	545	546	548	534	530
Wilson, NC (McrSA)	160	188	144	129	142	175	177	182	107	92	Gallup, NM (McrSA)	533	532	507	474	499	517	512	517	508	445
Winfield, KS (McrSA)	457	469	501	486	457	437	402	303	246	305	Middlesborough, KY (McrSA)	534	529	535	530	533	544	539	542	530	518
Winnemucca, NV (McrSA)	82	141	186	143	85	134	217	138	52	4	Raymondville, TX (McrSA)	535	537	537	533	530	534	548	520	513	513
Winona, MN (McrSA)	233	272	228	241	289	362	343	379	357	353	Summerville, GA (McrSA)	536	539	540	531	506	489	455	535	529	536
Wisconsin Rapids-Marshfield, WI (McrSA)	143	139	103	100	108	124	183	222	162	77	Kennett, MO (McrSA)	537	534	539	535	539	548	540	536	507	511
Woodward, OK (McrSA)	450	410	404	321	261	238	290	167	95	157	Portales, NM (McrSA)	538	540	527	534	537	539	536	541	492	482
Wooster, OH (McrSA)	17	7	14	14	7	5	5	34	84	110	Indianola, MS (McrSA)	539	536	541	540	540	549	545	546	535	520
Worthington, MN (McrSA)	287	275	181	195	235	219	245	275	352	277	Las Vegas, NM (McrSA)	540	541	534	536	536	546	542	550	490	422
Yankton, SD (McrSA)	61	50	53	73	47	70	146	250	348	278	Forrest City, AR (McrSA)	541	533	531	532	535	538	532	544	515	480
Zanesville, OH (McrSA)	125	136	149	182	177	173	131	199	257	276	Clarksdale, MS (McrSA)	542	543	542	541	541	547	547	543	533	463
Zapata, TX (McrSA)	531	526	526	516	474	486	392	206	136	156	Helena-West Helena, AR (McrSA)	543	542	543	543	542	551	550	545	532	529